



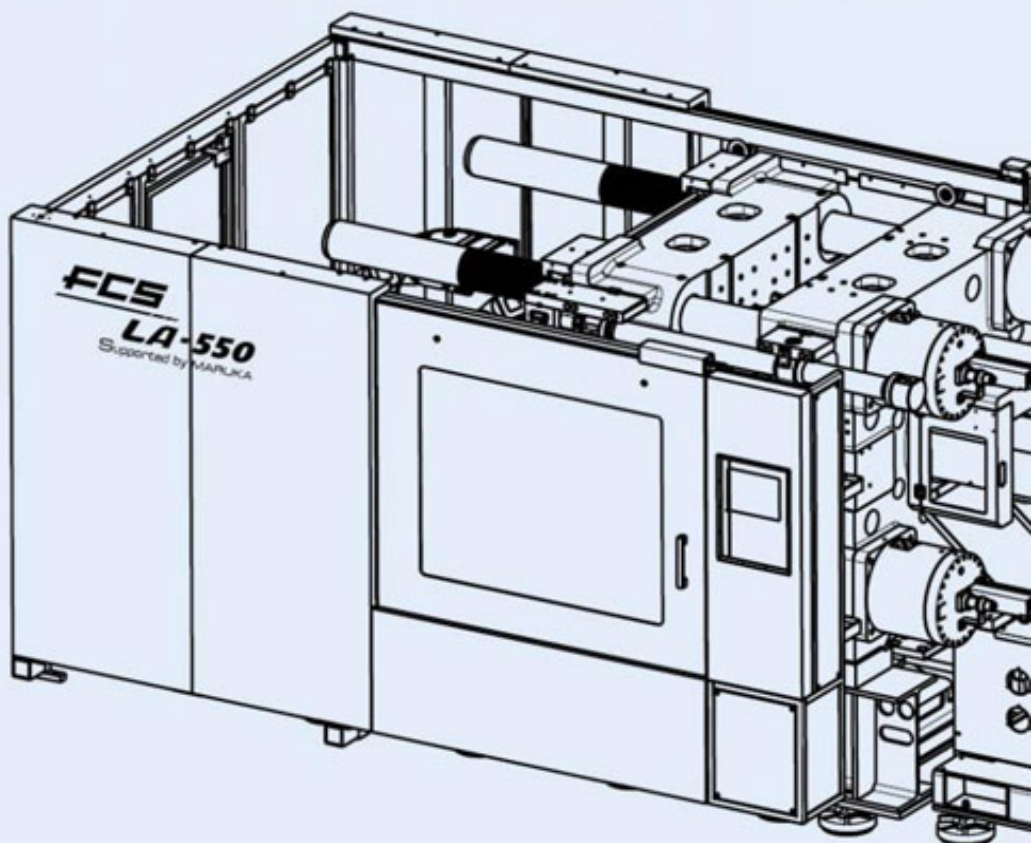
Polaris

Version 2018

LA SERIES

Two-Platen Injection Molding Machine



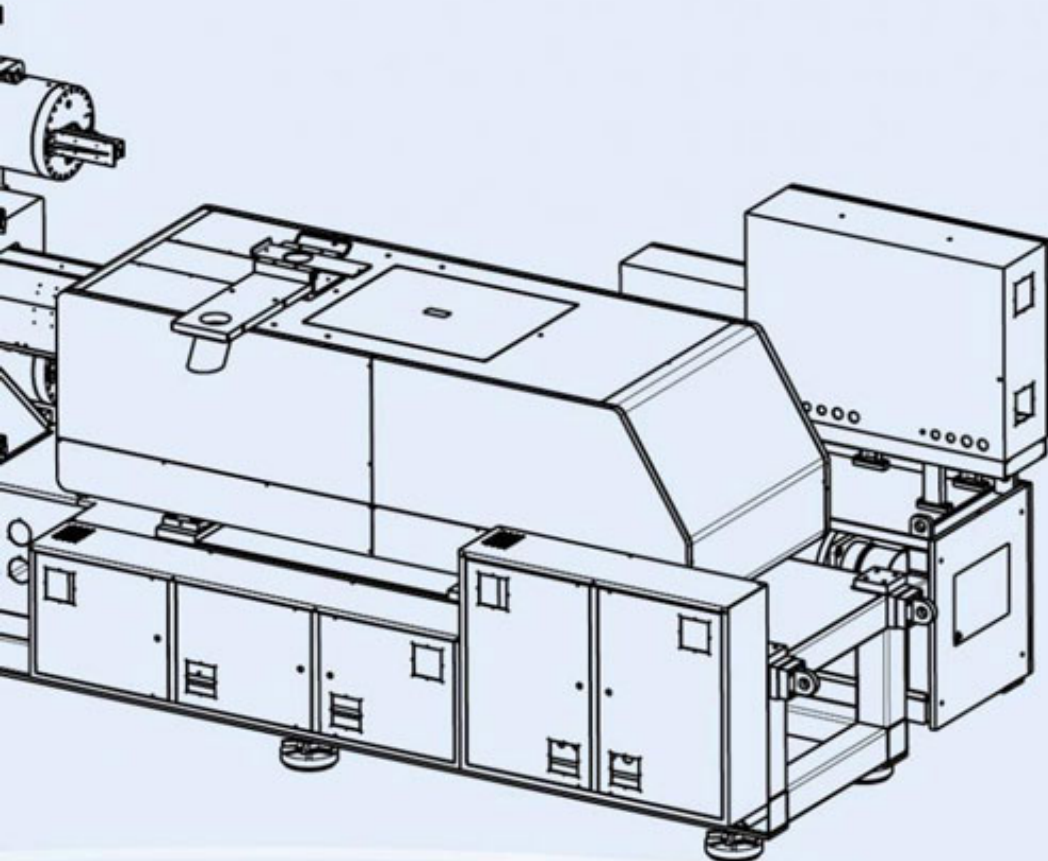


LA-550

Main Features

- 1 | A newly designed injection unit for precise and stable injection.
- 2 | Provides stable clamping force while injection, yielding a high mold rate.
- 3 | Newly designed automatic mold adjustment system enables faster mold changes.
- 4 | Mold clamping system with high pressure design can increase the clamping force and ensure the operation stably.
- 5 | The high pressure clamping control adopts European technology for easy set up and higher precision.
- 6 | Low pressure protection to enhance the mold life.

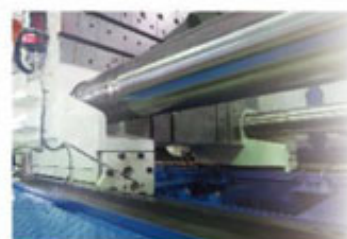
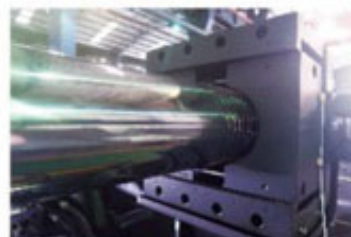
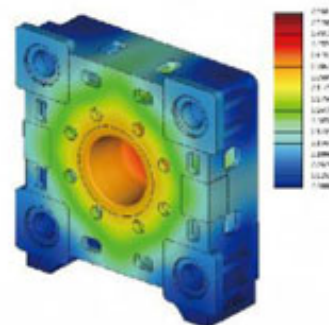
- Stable • Footprint Reduced



- 7 Fast mold opening speed which reduces the molding cycle time.
- 8 A larger mold clamping stroke and capacity than traditional machines well suited for products with greater depth.
- 9 A smaller two-platen design for space efficiency.
- 10 A new microcomputer integrated with PDP* for centralized factory management and manufacture quality monitoring.
*PDP(Process Data Protocol)
- 11 FCS servo system to achieve an average power-saving of 30%~70%.

Clamping Unit

- Platens are designed with FEM analysis to ensure the machine and the mold sustaining force balance which extends the machine life and also increase product quality.
- Equipped with a famous brand valve to control the high pressure cylinder, and ensures the tie bar would sustain a balance force. In addition, it can provide enough clamping force during injection.
- Tie Bar Locking Mechanism
A tie bar locking system with split nut mechanism for accurate clamping force and position.
- Moving Platen Guide
Moving platen support with exact guiding design to ensure precise movements even when heavy molds are mounted.



Hydraulic Loop



Power-saving hydraulic loop design provides features including:

- High pressure to break mold vacuum.
- FCS power-saving system for lessening energy consumption by up to 30%~70%.
- Patented regeneration loop for saving energy and increasing injection speed.
- Weldless flanges were used to reduce oil leak issue.

Injection Unit

- A specially-designed screw for better mixing.
- An injection unit featured with a multi-axled driven mechanism for precision and stability.



Control Unit - Hi-end Modular Controller

- Equipped with a high speed CPU for faster response.
- With a 12" screen display and graphic interface, for easy of use an operation.
- With PDP function for statistical data downloadable via USB.
- With authorization control function for parameter protection.
- Modular design simplifies maintenance & troubleshooting.



Producing plastic products more efficiently has already become a key factor for winning the competition in the market. FCS two-platen injection molding machines is the best for you, to help you decrease space and energy cost to reach your goal.

Comparison of 2-Platen and 3-Platen type injection machine

Item \ Type	2-Platen	3-Platen	
		Directly clamping	Toggle
Footprint	Smallest	Common	Largest
Daylight	Largest	Common	Smallest
Time to adjust die thickness	Shortest	Short	Long
Technique	Highest	High	Common
Cleanness	Cleanest	Cleaner	Normal

Comparison of machine length

FCS 2-Platen	Machine Length	FCS 3-Platen	Machine Length
LA-1870	539.37 in	FT-1848	669.3 in
LA-2310	578.74 in	FT-2200	748.0 in
LA-2640	590.55 in	FT-2640	748.0 in
LA-3080	625.98 in	FT-2970	787.4 in
LA-3630	637.79 in	FT-3300	787.4 in
LA-4400	653.54 in	FT-3850	846.5 in



FCS Group

FCS
www.fcs.com.tw

Fu Chun Shin Machinery Manufacture Co., Ltd.

No. 269, Baodong Road, Pitou Village, Guanmiao District, Tainan City 71841, Taiwan
TEL: +886-6-5950688 • FAX: +886-6-5951129 • E-mail: fcsco@fcs.com.tw



Sold and Serviced in America by MARUKA U.S.A. INC.

Missouri (Headquarter)

1210 NE Douglas Lee's Summit, MO 64086-4604
TEL: (816)524-1811 FAX: (816)524-5444

New Jersey

45 Route 46 East, Suite 610 P.O. Box 747 Pine Brook, NJ 07058
TEL: (973)487-3800, (800)631-0426
FAX: (973)244-2147

Los Angeles

16440 Manning Way, Cerritos, CA 90703
TEL: (562)926-3654 FAX: (562)926-0884

Chicago

1062 Garfield Street Lombard, IL 60148
TEL: (630)953-1707 FAX: (630)953-1753

Charlotte

4526-B Westinghouse Blvd. Charlotte, NC 28273
TEL: (704)588-9910 FAX: (704)588-9950

NOTES

- The figures are subject to change without any legal obligation on the part of the manufacture.
- The specifications are expressed in SI units. (1Mpa=10.2kgf/cm² 1kN=0.102tonf)
- The applicable max. injection pressure and holding pressure will be restricted according to the material in the real molding operation.
- The applicable max. injection pressure and holding pressure will be restricted by molding conditions and cycle time.
- The figures for the max. injection rate and the max. injection speed are theoretical values.
- The actual injection rate and injection speed will be restricted by pressure.
- A large-sized screw may not be applicable to some kinds of material.
- Breaker capacity may be changed when optional devices are attached.



For safe use of LA Series, please read the respective manual carefully, especially sections for operation and maintenance, and follow all the safety precaution instructions specified in the manual.

Photographs in the catalog include optional devices. If these products and technologies (including programs) are subject to Taiwan export control laws, including Taiwan Foreign Exchange and Foreign Trade Law, the products and technologies are required to obtain an export license of the Taiwan government, when exported from Taiwan.