



Since 1977

凱美塑膠機械股份有限公司
KAI MEI PLASTIC MACHINERY CO., LTD.

BLOW MOLDING MACHINE

中空成型機



History 公司簡介

公司經營理念

顧客滿意 同仁樂意 經營得意 永續經營

凱美塑膠機械股份有限公司創立於 1977 年，為一中空成型機之製造廠。凱美製造的中空成型機可生產各種塑膠材質之中空容器，如 PE、PVC、PP、PETG、PC...。自生產 5ml 小型中空容器的 PBA 系列機型，至生產 1,500 公升大型中空容器的 PBI-XL 系列機型，皆有良好口碑。

為了落實產品多元化的公司策略，凱美長期致力於機械的開發與研究，單、雙、三、四至八模頭等中空成型機，模內貼標機，一步法射拉吹成型機等產品，不僅符合市場需求，亦讓客戶有更多的選擇，以達到最大經濟效益。堅持品質是凱美公司一貫的傳統，凱美於 1999 年取得 ISO 9002 認證，2001 年取得 CE 規格認證，於 2002 年取得 ISO 9001 認證。


由於高品質、高效率的機械結構，嚴格的品質管制及優良的售後服務，使凱美在過去的 30 餘年，銷售逾 5,000 台機械至 85 多個國家，在國際市場上享有優良的商譽，並榮獲中華民國第 14 屆小巨人獎、第 21 屆國家磐石獎，橡塑膠機械研究發展創新產品競賽佳作獎，台灣精品獎等多項殊榮。

為了提升公司整體競爭力，凱美於 1998 年於中國大陸東莞設廠，佔地 15,000 平方米，除專業生產中空成型機，內銷中國大陸市場外，亦出口至世界各國。

凱美公司深切體認唯有不斷的改革與創新，走在市場需求的前端，為客戶提供更俱競爭性的產品，才是公司的永續經營之道，一如凱美的公司經營理念：顧客滿意、同仁樂意、經營得意、永續經營。



KAI MEI



Our Management Principles

Customer Satisfaction / Colleague Happiness
Operation Smoothness / Endeavour Perpetuity

Kai Mei Plastic Machinery Co., Ltd., established in 1977, is a highly reputed manufacturer of blow molding machines. Different types of machines are designed to produce containers of various raw materials such as PE, PVC, PP, PETG, PC, etc. Kai Mei can produce 5-ml containers of PBA Series Machines to 1,500-liter containers of PBI-XL Series Machines. These are fully recognized by customers around the world.

In order to implement the company's strategy of product diversification, Kai Mei's R&D department is devoted to develop new machines constantly, including single, double, triple, quadruple to octonary die-head blow molding machines, in-mold labeling machines, and injection-stretch blow molding machines. These machines not only meet market requirements, but also offer more choices to customers in order to reap the greatest economic benefits. Focus on quality is a tradition at Kai Mei. We acquired ISO 9002 certificate in 1999, CE certificate in 2001, and ISO 9001 certificate in 2002.

Due to our high quality, high efficiency, serious quality control system, and excellent

after-sales services, Kai Mei has sold more than 5,000 machines to 85 different countries around the world over the past 30 years. Kai Mei machines have won a high reputation worldwide, as well as having been awarded many prizes such as the National Award of 14th Rising Star Award, 21st Outstanding SMEs, "Innovative Design Award of Rubber and Plastic Machinery" prize and the "Taiwan Excellence prize" 2009.

In order to upgrade the whole company's competitive advantage, Kai Mei set up a factory in Dongguan, China in 1998. The factory has 15,000 square meters and specializes in the production of blow molding machines of the domestic market and exports to every country in the world.

Kai Mei deeply recognizes that the only way for a company's endeavors to perpetuate depends on continuous improvement and innovation, reaching market requirements, and providing competitive products for our customers. Just like our principles reveal: "Customer Satisfaction, Colleague Happiness, Operation Smoothness, Endeavour Perpetuity".

Quality declaration of Kai Mei machines

機器品質宣言

- ❖ 適合多種塑料之吹製成型，如PE, PP, PVC, PET-G, NYLON, PC, EVA。並根據原料特性設計螺桿長徑(L/D)比，使塑料達到最有效率之生產。
- ❖ 機型可依客戶產品要求設計，如雙色、白線、雙層、三層，最高可達到六層。
- ❖ 產品容量範圍自 5 毫升至 1,500 公升。
- ❖ 結構設計堅固，可承受強大壓力。
- ❖ 強力油壓開關模系統，提供產品品質之生產保證。
- ❖ 使用進口油壓、風壓及電器零件。
- ❖ 任何機型可依訂單特殊要求設計，以達客戶生產需求。
- ❖ Suitable for blow molding machines of various raw materials such as PE, PP, PVC, PET-G, Nylon, PC, and EVA. Specially designed screw L/D ratio for different material assures highly efficient production.
- ❖ Machine can be customized design. For example, two color, visistripe, two layer, three layer, up to six layer.
- ❖ Range of container capacities is from 5 ml. to 1,500 liters.
- ❖ Firm construction provides outstanding resistance capability under high pressure.
- ❖ Powerful hydraulic clamping system.
- ❖ Adopts imported high-quality hydraulic, pneumatic and electronic components.
- ❖ Customized machine design is available to meet specific requirements.



人機介面電控系統

Human-machine interface (hmi) control system



- ✦ 觸控式全機功能及狀態均由此操作站監視及設定操作，包括溫度設定、油壓系統壓力、TIMER計時器、功能選擇、厚薄控制(選用)、手動操作、資料儲存順序控制及ALARM顯示。
- ✦ 內建模組記憶功能，可儲存140組生產參數。
- ✦ 密碼保護功能，防止操作員因誤觸而更改到設定參數。
- ✦ All machine functions and operational status are monitored and set on the touch screen control station, including temperature setting, hydraulic system pressure, timer, function selection, parison control (optional), manual operation, data saving sequence control and alarm display.
- ✦ Built-in module memory function can save 140 sets of production parameters.
- ✦ Password-protection function prevents operator from accidentally changing the setting parameters.



押出機構 / EXTRUDER BASE

- ✦ 押出平台可上下左右調整，方便調校模具。
- ✦ 抬頭機構即使快速押出塑料亦無塑料切斷不易之虞。
- ✦ 料管安裝散熱風車，防止螺桿升溫，穩定塑料混鍊及押出效果。
- ✦ The extruder base can be adjusted in the up/down and left/right directions for convenient mold adjustment.
- ✦ The lifting head design assures fast extruding without difficult cutting problems.
- ✦ Cooling fan equipped on the barrel effectively avoids temperature raising on the screw, stabilizes material mixing and ensures superior extruding performance.



模架 / MOLD CARRIAGE

- ✦ 模架設計滾珠線性滑軌，移模定位精準、穩定，絕不震動。
- ✦ 模板經磷酸鹽皮膜處理預防生鏽。
- ✦ Mold carriage traverses on linear motion guides for accurate position, stable motion and zero vibration.
- ✦ The mold platens are treated and coated by phosphate film to avoid rusting.

模頭 / DIE HEAD

- ✦ 模頭為魚雷頭(TORPEDO)式調整容易。
- ✦ 模頭出料穩定，長短一致，換色 / 換料快速，原料不殘留，適合快速大量生產。
- ✦ 模頭可上下調整，方便模具之裝卸。
- ✦ The torpedo-type die head is easy to adjust.
- ✦ The die head features maximum stability of material output, consistent length, quick change of color and material, as well as zero material deposition. Designed for high-speed production on a mass production line.
- ✦ The die head is vertically adjustable and the mold is easy to replace.



油壓系統 / HYDRAULIC SYSTEM

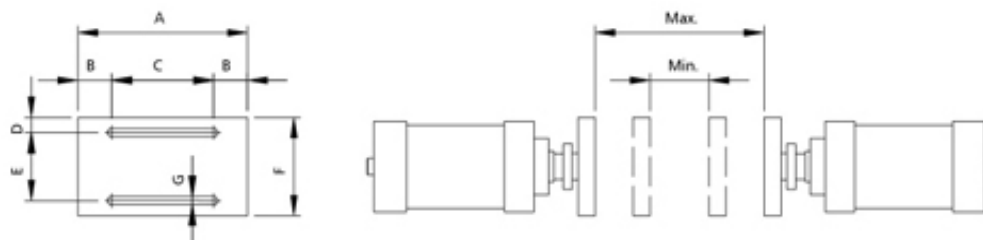
- ✦ 採用日本TOKIMEC原裝進口油壓閥，壓力流量比例式油壓迴路設計，速度及壓力可依產品需求做多段控制。
- ✦ Adopts Japanese Tokimec high-quality hydraulic valves. The hydraulic circuit features proportional pressure and flow rate. Speed and pressure are multi-step control to meet production requirements.



PBA-210 (A)

- ❖ 此系列為完全氣壓驅動，速度快，特別適合各種小容器或棒棒冰容器之製造。產量高、具經濟效益，維護容易。
- ❖ RELAY電控系統。
- ❖ This series of machines are fully pneumatic driven featuring high speed motion. Especially ideal for providing small containers and popsicle containers. The series features high production output, highly economic efficiency and easy maintenance.
- ❖ RELAY CONTROL SYSTEM





模板尺寸圖

MOLD PLATEN DIMENSIONS

UNIT:mm

NO.	Max.	Min.	A	B	C	D	E	F	G
PBA-210	240	80	230	46	138	20	90	130	11

Model No.	型 號	Unit	PBA-210(PE)	PBA-210A(PVC)	PBA-210A(PE)
Max. product capacity	最大產品容量	C.C.	20~300	20~300	20~300
Min. / Max. dia. of product	產品最小最大直徑	mm	10~80	10~80	10~80
Screw diameter	螺桿直徑	mm	40	40	40
Screw L / D ratio	螺桿比例		22/1	22/1	22/1
Inverter motor	普通馬達	HP	5	5	5
Screw rotating speed	螺桿轉速	r.p.m.	15~50	15~50	15~50
Extruding capacity	押出量	kg/hr	14	16	14
Outer diameter of die mouth	模嘴外徑	mm	40	46	40
Open close daylight	開閉模極限	mm	80~240	80~240	80~240
Dry cycle	空循環	sec.	2	2	2
Pressure of air	空氣壓力	kg/cm ²	4~6	4~6	4~6
Compressed air consumption	空氣消耗量	L/min	400	600	500
Total power consumption	總電力	kw/h	8	9	8
Machine net weight	機械淨重	kg	500	600	600
Gross weight	裝箱毛重	kg	900	1000	1000
Machine dimensions	機械尺寸	m	1.8x1.6x1.9	1.8x1.6x1.9	1.8x1.6x1.9

以上規格如因設計變更恕不另行通知
All specifications and designs are subject to change without notice.

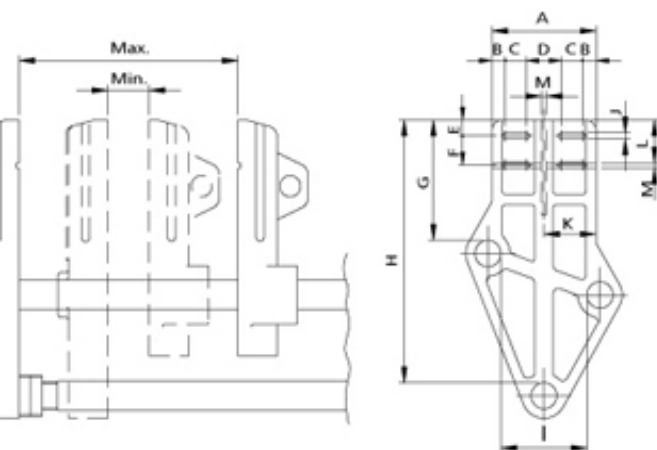
PBA-210 (A)

PBS-305 / 405 / 505 (S / D / T / Q)

- ❖ 依不同塑料材質如。PE, PP, PVC, PS, PC NYLON等設計各機構，適合生產中小容量之各種容器，可長時間高效率全自動生產。
- ❖ 10" TFT彩色LCD觸控螢幕人機介面電控系統，操作簡易富人性化。
- ❖ Custom design is available to suit various plastic materials such as PE, PP, PVC, PS, PC and nylon. Designed for producing medium and small sized containers. Highly efficient automatic long production runs.
- ❖ 10" TFT colorful LCD touch screen combined with human-machine interface control system for user-friendly operations.



Model No.	型 號	Unit	PBS-305S
Product capacity	產品容量	C.C.	50-500
Product diameter	產品直徑	mm	20-80
Screw diameter	螺桿直徑	mm	40
Screw L / D ratio	螺桿比例		22/1
Inverter motor	變頻馬達	HP	7.5
Screw rotation speed	螺桿轉速	r.p.m.	15-65
Extruding capacity	押出量	kg/hr	14
Max. Die mouth diameter	最大模嘴外徑	mm	40
Mould center distance	模中心距	mm	~
Clamping force	鎖模壓力	ton	2.4
Hydraulic drive motor	油壓驅動馬達	HP	5
Dry cycle	空循環	sec.	2.6
Air pressure	空氣壓力	Bar	6-8
Air consumption	空氣消耗量	L/min	500
Total power consumption	總電力	kw/h	14.4
Machine net weight	機械淨重	kg	1,400
Gross weight	裝箱毛重	kg	1,900
Machine dimensions	機械尺寸	m	2.3x1.5x2.2



模板尺寸圖
MOLD PLATEN DIMENSIONS

UNIT:mm

NO.	PBS-305	PBS-405	PBS-505	NO.	PBS-305	PBS-405	PBS-505
Max.	230	320	420	G	225	310	300
Min.	60	60	80	H	496	640	624
A	200	260	300	I	150	200	240
B	25	55	45	J	12	15	16
C	40	40	60	K	100	130	150
D	70	70	90	L	86	75	86
E	30	40	40	M	10	10	10
F	55	70	92				

配合模內貼標機之使用開模尺寸另訂
For use with in-mold labeling machine.
Open-close clamping mold is specified upon request.

PBS-305D	PBS-305T	PBS-405S	PBS-405D	PBS-405T	PBS-405Q	PBS-505S	PBS-505D	PBS-505T	PBS-505Q
30-200	10-100	80-1,000	50-500	30-200	10-100	450-2,500	200-1,000	50-500	30-200
15-65	8-30	30-100	20-80	15-65	8-30	45-150	30-100	20-80	15-65
40	40	45	45	45	45	55	55	55	55
22/1	22/1	24/1	24/1	24/1	24/1	24/1	24/1	24/1	24/1
7.5	7.5	10	10	10	10	15	15	15	15
15-65	15-65	15-65	15-65	15-65	15-65	15-65	15-65	15-65	15-65
14	14	24	24	24	24	36	36	36	36
35	25	55	40	35	25	80	50	40	35
85	75	~	100	85	75	~	120	100	85
2.4	2.4	4.5	4.5	4.5	4.5	5.3	5.3	5.3	5.3
5	5	5-7.5	5-7.5	5-7.5	5-7.5	7.5-10	7.5-10	7.5-10	7.5-10
2.6	2.6	3	3	3	3	3.3	3.3	3.6	3.6
6-8	6-8	6-8	6-8	6-8	6-8	6-8	6-8	6-8	6-8
500	500	600	600	600	600	700	700	700	700
15.9	16.3	21.5	21.9	24.7	26.3	29.0	31.2	33.3	33.4
1,400	1,400	2,500	2,500	2,500	2,500	3,700	3,700	3,700	3,700
1,900	1,900	3,000	3,000	3,000	3,000	4,200	4,200	4,200	4,200
2.3x1.5x2.2	2.4x1.6x2.2	2.8x2.1x2.3	2.8x2.1x2.3	2.9x2.2x2.3	2.9x2.2x2.3	3.2x1.8x2.3	3.2x1.8x2.3	3.4x2.5x2.5	3.4x2.5x2.5

以上規格如因設計變更恕不另行通知
All specifications and designs are subject to change without notice.

PBS-605 / 705 (S / D / T / Q)

- ❖ 高強度平移式模架結合滾珠線性滑軌設計，速度快、穩定性高。配合打溢料設備及機械手，可全自動高效率生產。
- ❖ 10" TFT彩色LCD觸控螢幕人機介面電控系統，功能強、操作簡易、富人性化。
- ❖ Durable and horizontal traveling mold carriage combined with linear motion guides for maximum stability. The series is excellent for producing medium and large sized containers. Available to equip with an auto deflashing device and take-out robot to achieve fully automatic and highly efficient production.
- ❖ 10" TFT colorful LCD touch screen with human-machine interface control system. It provides powerful functions, maximum operational convenience and user-friendly operation.



Model No.

Max. product capacity

Min. / Max. dia. of product

Screw diameter

Screw L / D ratio

Inverter motor

Screw rotating speed

Extruding capacity

Outer diameter of die mouth

Mould center distance

Clamping force

Oil hydraulic drive motor

Dry cycle

Air Pressure

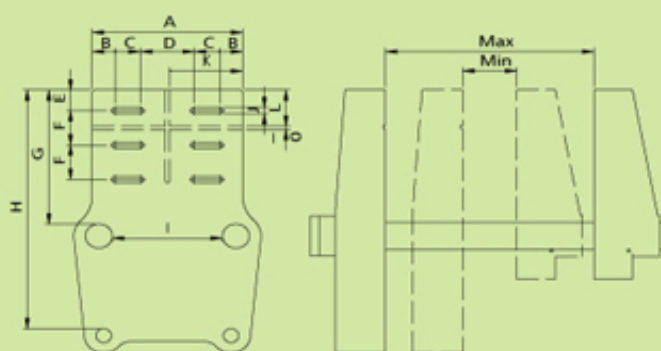
Air consumption

Total power consumption

Machine net weight

Gross weight

Machine dimensions



模板尺寸圖

MOLD PLATEN DIMENSIONS

UNIT:mm

NO.	PBS-605	PBS-705	NO.	PBS-605	PBS-705
Max.	540	650	F	100	180
Min.	140	200	G	410	430
A	390	440	H	715	740
B	60	80	I	280	330
C	65	60	J	18	18
D	140	160	K	190	215
E	60	60	L	105	105

配合模內貼標機之使用開關模尺寸另訂

For use with in-mold labeling machine.

Open-close clamping mold is specified upon request.

型 號	Unit	PBS-605S	PBS-605D	PBS-605T	PBS-605Q	PBS-705S	PBS-705D	PBS-705T	PBS-705Q
最大產品容量	C.C.	1,000-5,000	450-1,800	200-1,000	50-500	2,500-10,000	600-2,700	450-1,800	200-1,000
產品最小最大直徑	mm	75-200	50-120	30-100	20-80	100-250	60-140	50-120	30-100
螺桿直徑	mm	65	65	65	65	75	75	75	75
螺桿比例	L/D	24/1	24/1	24/1	24/1	24/1	24/1	24/1	24/1
普通馬達	HP	20	20	20	20	40	40	40	40
螺桿轉速	r.p.m.	15-65	15-65	15-65	15-65	15-65	15-65	15-65	15-65
押出量	kg/hr	55	55	55	55	75	75	75	75
模嘴外徑	mm	150	65	50	40	200	80	65	50
模中心距	mm	—	140	120	100	—	160	140	120
鎖模壓力	ton	8.8	8.8	8.8	8.8	13.0	13.0	13.0	13.0
泵浦驅動馬達	HP	15	15	15	15	25	25	25	25
空循環	sec.	4.2	4.2	5.0	5.0	5.0	5.0	5.2	5.2
空氣壓力	kg/cm ²	6-8	6-8	6-8	6-8	6-8	6-8	6-8	6-8
空氣消耗量	L/min	750	750	750	750	1200	1200	1,200	1,200
總電力	kw/h	38.0	40.5	42.0	46.7	64.9	66.4	67.3	75.0
機械淨重	kg	4,800	4,800	4,800	4,800	5,000	5,000	6,500	6,500
裝箱毛重	kg	5,500	5,500	5,500	5,500	6,000	6,000	7,000	7,000
機械尺寸	m	3.7x2.5x2.5	3.7x2.5x2.5	3.8x2.7x2.5	3.8x2.7x2.5	4.3x2.7x2.6	4.3x2.7x2.6	4.3x2.7x2.8	4.3x2.7x2.8

以上規格如因設計變更恕不另行通知

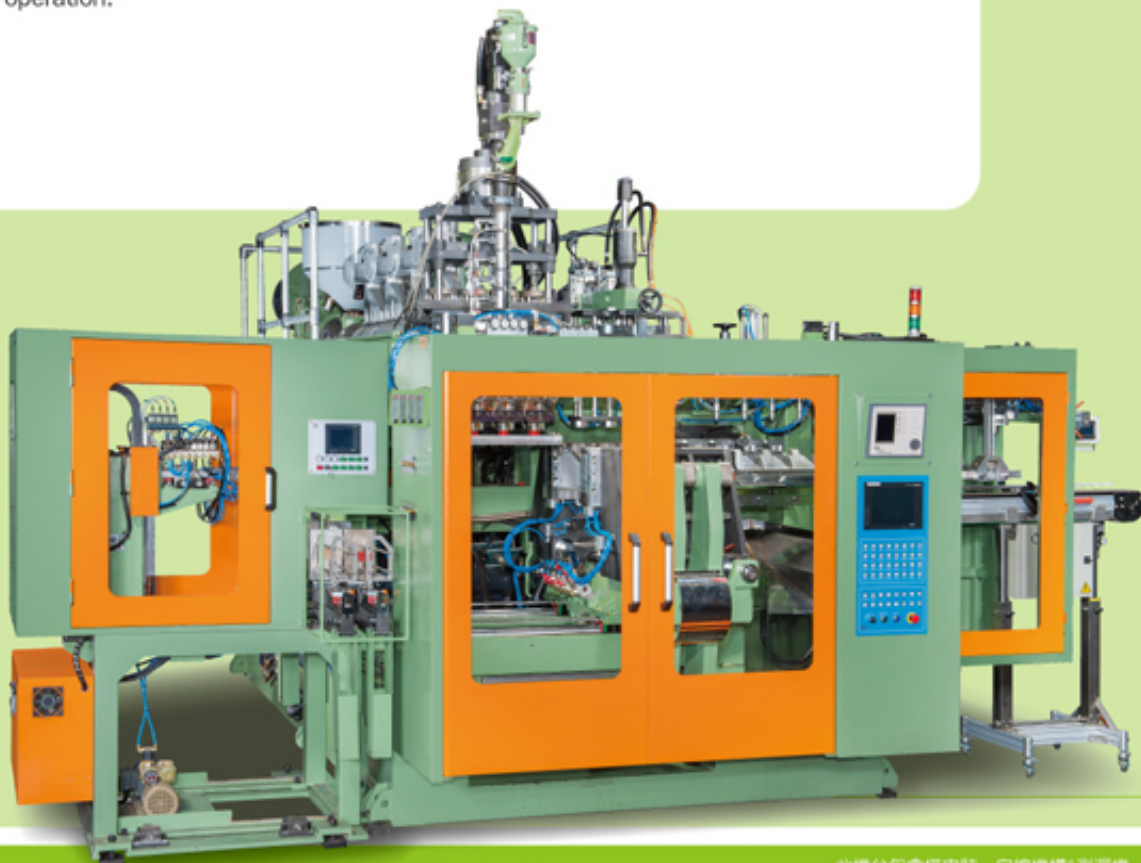
All specifications and designs are subject to change without notice.

PBS-905

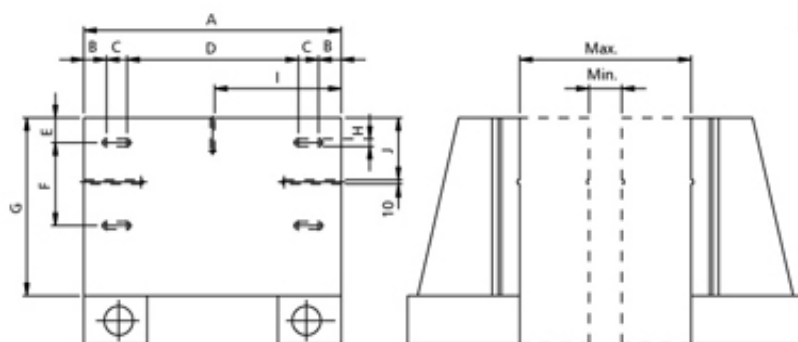
(S / D / T / Q / O)



- ❖ 強力曲肘式鎖模機構結合滾珠線性滑軌設計，穩定性高，適合中大型容器之生產。多模頭設計可高速生產中小型容器。可依客戶要求設計特殊結構，亦可生產加視窗、雙色、雙層之產品。
- ❖ 10" TFT 彩色LCD觸控螢幕人機介面電控系統，功能強、操作簡易、富人性化。
- ❖ Powerful, crank type mold clamping system combined with linear guides for maximum stability. This series is ideal for producing medium and large sized containers. Multiple die head configuration is especially ideal for producing medium and small sized containers at high production speed. Custom machine configurations are available. Also available to produce product with visi-stripe, two color and two layers.
- ❖ 10" TFT colorful LCD touch screen with human-machine interface control system. It provides powerful functions, maximum operational convenience and user-friendly operation.



此機台包含模內貼、白線機構及漏機 (選配)
Machine with IML, visistripe, and leak tester (optional)



模板尺寸圖
MOLD PLATEN DIMENSIONS

UNIT:mm

NO.	Max.	Min.	A	B	C	D	E	F	G	H	I	J
PBS-905S,D	640	240	450	65	50	220	60	220	449	18	220	165
PBS-905Q	640	240	550	55	50	340	70	200	489	18	270	180

配合模內貼標機之使用、開關模尺寸另訂
For use with in-mold labeling machine. Open-close clamping mold is specified upon request.

Model No.	型號	Unit	PBS-905S	PBS-905D	PBS-905T	PBS-905Q	PBS-9050
Max. product capacity	最大產品容量	C.C.	10,000-20,000	1,500-5,000	600-2,700	450-1,800	300-500
Min. / Max. dia. of product	產品最小最大直徑	mm	150-300	80-180	60-140	50-120	30-60
Screw diameter	螺桿直徑	mm	90	90	90	90	90
Screw L / D ratio	螺桿比例		24/1	24/1	24/1	24/1	24/1
Inverter motor	普通馬達	HP	60	60	60	60	60
Screw rotating speed	螺桿轉速	r.p.m.	15-65	15-65	15-65	15-65	15-65
Extruding capacity	押出量	kg/hr	140	140	140	140	140
Outer diameter of die mouth	模嘴外徑	mm	240	135	80	65	35
Mould center distance	模中心距	mm	~	250	160	140	80
Clamping force	鎖模壓力	ton	16.8	16.8	16.8	16.8	16.8
Oil hydraulic drive motor	泵浦驅動馬達	HP	30	30	30	30	30
Dry cycle	空循環	sec.	5.7	5.7	6.0	6.0	6.5
Pressure of air	空氣壓力	kg/cm ²	6-8	6-8	6-8	6-8	6-8
Compressed air consumption	空氣消耗量	L/min	1,500	1,500	1,500	1,500	1,500
Total power consumption	總電力	kw/h	96.0	94.0	95.7	99.2	101.0
Machine net weight	機械淨重	kg	10,000	12,000	12,000	12,000	12,000
Gross weight	裝箱毛重	kg	11,500	13,000	13,000	13,000	13,000
Machine dimensions	機械尺寸	m	5.6x4.4x3.5	5.1x3.1x2.9	5.1x3.1x2.9	5.3x2.5x2.4	5.3x2.5x2.4

以上規格如因設計變更恕不另行通知
All specifications and designs are subject to change without notice.

PBSS-605 / 705 (S / D / T / Q)



- 三、四支導桿平移式模架結合滾珠線性滑軌設計，性能卓越、效率高，適合高產量需求的小型容器生產。配合打溢料設備及機械手，可全自動高效率生產。
- 10" TFT彩色LCD觸控螢幕人機介面電控系統，功能強、操作簡易、富人性化。
- Three and four tie-bar horizontal traveling mold carriage combined with linear motion guides for outstanding performance and high efficiency. This series is designed to meet high production and small size container requirements. Available to equip with auto de-flashing device and take out robot to achieve fully automatic and highly efficient production.
- 10" TFT colorful LCD touch screen with human-machine interface control system. It provides powerful functions, convenient operation and user-friendly operation.



Model No.

Product capacity

Product diameter

Screw diameter

Screw L / D ratio

Inverter motor

Screw rotation speed

Extruding capacity

Max. Die mouth diameter

Mould center distance

Clamping force

Hydraulic drive motor

Dry cycle

Air pressure

Air consumption

Total power consumption

Machine net weight

Gross weight

Machine dimensions



模板尺寸圖

MOLD PLATEN DIMENSIONS

UNIT:mm

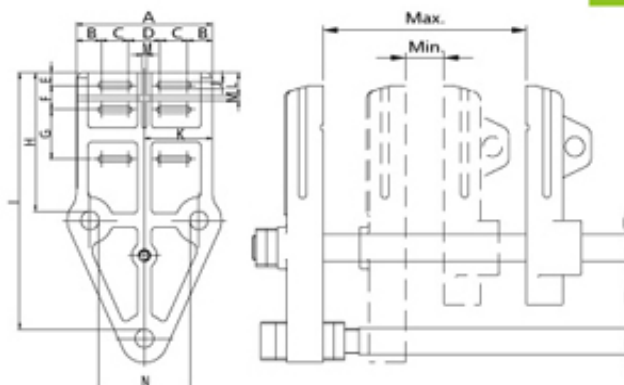
NO.	PBSS-605	PBSS-705	NO.	PBSS-605	PBSS-705
Max.	320	420	G	107	-
Min.	60	80	H	300	332.5
A	260	370	I	556	642.5
B	55	60.5	J	14	18
C	60	80	K	150	185
D	70	89	L	50	94.5
E	27	55	M	10	10
F	53	90	N	200	205

配合模內貼標機之使用開關模尺寸另訂

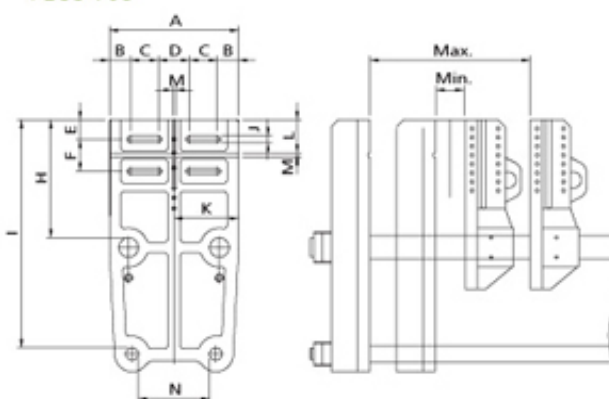
For use with in-mold labeling machine.

Open-close clamping mold is specified upon request.

PBSS-605



PBSS-705



型號	Unit	PBSS-605S	PBSS-605D	PBSS-605T	PBSS-605Q	PBSS-705S	PBSS-705D	PBSS-705T	PBSS-705Q
產品容量	C.C.	80-1,000	50-500	30-200	10-100	450-2,500	200-1,000	50-500	30-200
產品直徑	mm	30-100	20-80	15-65	8-30	45-150	30-100	20-80	15-65
螺桿直徑	mm	65	65	65	65	75	75	75	75
螺桿比例		24/1	24/1	24/1	24/1	24/1	24/1	24/1	24/1
變頻馬達	HP	20	20	20	20	40	40	40	40
螺桿轉速	r.p.m.	15-65	15-65	15-65	15-65	15-65	15-65	15-65	15-65
押出量	kg/hr	55	55	55	55	75	75	75	75
最大模嘴外徑	mm	55	40	35	25	80	50	40	35
模中心距	mm	~	100	85	75	~	120	100	85
鎖模壓力	ton	4.5	4.5	4.5	4.5	5.3	5.3	5.3	5.3
油壓驅動馬達	HP	15	15	15	15	20	20	20	20
空循環	sec.	3X2	3X2	3.2X2	3.2X2	3.3X2	3.3X2	3.6X2	3.6X2
空氣壓力	bar	6-8	6-8	6-8	6-8	6-8	6-8	6-8	6-8
空氣消耗量	L/min	1,000	1,000	1,200	1,200	1,300	1,300	1,300	1,300
總電力	kw/h	37.6	38.1	42.3	42.6	58.5	62.0	63.0	69.0
機械淨重	kg	5,000	5,000	6,000	6,000	6,000	6,000	7,500	7,500
裝箱毛重	kg	6,800	6,800	7,800	7,800	8,000	8,000	9,000	9,000
機械尺寸	m	4x3.3x2.6	4x3.3x2.6	4.1x3.5x2.6	4.1x3.5x2.6	4X3.3X2.4	4X3.3X2.4	4.1X3.7X2.4	4.1X3.7X2.4

以上規格如因設計變更恕不另行通知

All specifications and designs are subject to change without notice.

PBSS-905 / 1005 (S / D / T / Q)



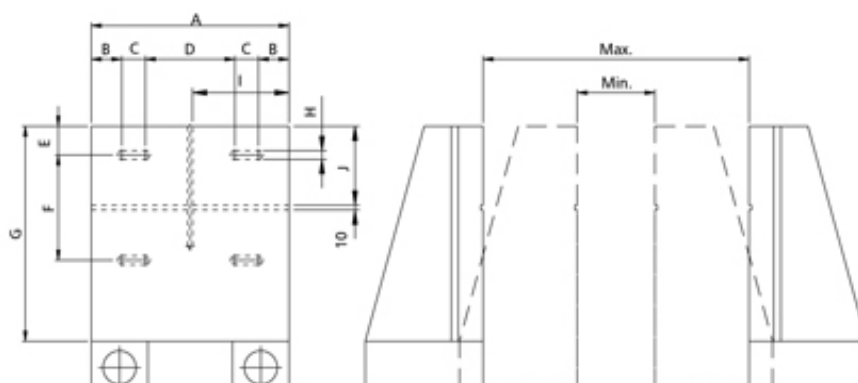
- ❖ 強力曲肘式鎖模機構結合滾珠線性滑軌設計，性能卓越、效率高，特別適合高產量需求之容器生產。配合打溢料設備及機械手，可全自動高效率生產。
- ❖ 10" TFT 彩色LCD觸控螢幕人機介面電控系統，功能強、操作簡易、富人性化。

- ❖ Powerful, crank-type mold clamping system combined with linear motion guides for outstanding performance and high efficiency. This series is designed to meet high production requirements. Available to equip with auto deflashing device and take-out robot to achieve fully automatic, highly efficient production.
- ❖ 10" TFT colorful LCD touch screen with human-machine interface control system. It provides powerful functions, maximum operational convenience and user-friendly operation.



Model No.

Max. product capacity
Min./Max. dia. of product
Screw diameter
Screw L/D ratio
Inverter motor
Screw rotating speed
Extruding capacity
Outer diameter of die mouth
Mould center distance
Clamping force
Oil hydraulic drive motor
Dry cycle
Pressure of air
Compressed air consumption
Total power consumption
Machine net weight
Gross weight
Machine dimensions



模板尺寸圖
MOLD PLATEN DIMENSIONS

UNIT:mm

NO.	Max.	Min.	A	B	C	D	E	F	G	H	I	J
PBSS-905	500	160	380	50	50	180	60	196	415	18	185	150
PBSS-1005	640	240	420	65	50	190	60	220	449	18	205	165

配合模內貼標機之使用、開關模尺寸另訂

For use with in-mold labeling machine. Open-close clamping mold is specified upon request.

型號	Unit	PBSS-905S	PBSS-905D	PBSS-905T	PBSS-905Q	PBSS-1005S	PBSS-1005D	PBSS-1005T	PBSS-1005Q
最大產品容量	C.C.	1,000-5,000	600-2,700	200-1,000	50-500	2,500-10,000	1,500-5,000	600-2,700	200-1,000
產品最小最大直徑	mm	75-200	60-140	30-100	20-80	100-250	80-180	60-140	30-100
螺桿直徑	mm	90	90	90	90	100	100	100	100
螺桿比例		24/1	24/1	24/1	24/1	26/1	26/1	26/1	26/1
普通馬達	HP	60	60	60	60	75	75	75	75
螺桿轉速	r.p.m.	15-65	15-65	15-65	15-65	15-65	15-65	15-65	15-65
押出量	kg/hr	140	140	140	140	180	180	180	180
模嘴外徑	mm	150	80	50	40	200	135	80	50
模中心距	mm	~	160	120	100	~	250	160	120
鎖模壓力	ton	10.3	10.3	10.3	10.3	16.8	16.8	16.8	16.8
泵浦驅動馬達	HP	25	25	25	25	40	40	40	40
空循環	sec.	4.8X2	4.8X2	5X2	5X2	5X2	5X2	5.2X2	5.2X2
空氣壓力	kg/cm ²	6-8	6-8	6-8	6-8	6-8	6-8	6-8	6-8
空氣消耗量	L/min	2,000	2,000	2,000	2,000	2400	2400	2400	2400
總電力	kw/h	86.6	88.4	89.4	91.1	108.1	113.2	116.6	119.9
機械淨重	kg	10,000	10,000	10,000	10,000	12,000	12,000	14,000	14,000
裝箱毛重	kg	12,000	12,000	12,000	12,000	13,500	13,500	15,500	15,500
機械尺寸	m	4.6x4.4x2.8	4.6x4.4x2.8	4.8x4.5x2.8	4.8x4.5x2.8	5.3x6.2x3.2	5.3x6.2x3.2	5.6x6.2x3.2	5.6x6.2x3.2

以上規格如因設計變更恕不另行通知

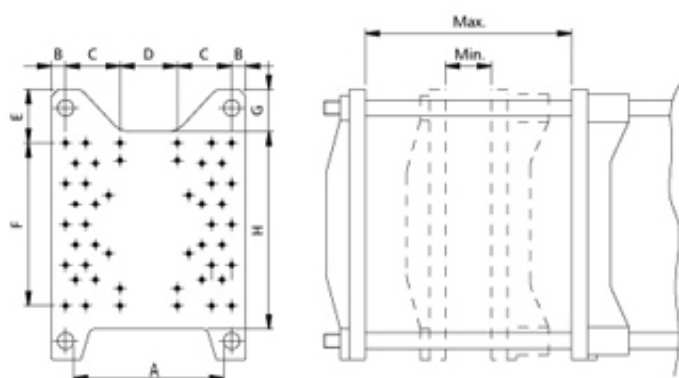
All specifications and designs are subject to change without notice.

PBI-705 / 905 / 1005



- ✦ 螺旋式先進先出儲料式模頭，換色快速。
- ✦ 四導桿式模板，鎖模平均。可生產10至100公升中大型化學桶、汽油桶等。
- ✦ 10" TFT 彩色LCD觸控螢幕人機介面電控系統，功能強、操作簡易、富人性化。
- ✦ Screw type with first-in and first-out accumulation die head provides fast color change. 4 tie-bars for mold platens ensure uniform mold clamping. This series is suitable for producing 10 ~ 100 liter medium and large sized containers such as chemical and gasoline tanks, etc.
- ✦ 10" TFT colorful LCD touch screen with human-machine interface (HMI) control system. It provides powerful functions, convenient operation, and user-friendly operations.





模板尺寸圖
MOLD PLATEN DIMENSIONS

UNIT:mm

NO.	Max.	Min.	A	B	C	D	E	F	G	H
PBI-705	900	200	655	62.5	237.5	250	230	700	180	850
PBI-905	1,200	400	830	70	170	515	220	840	140	1,000
PBI-1005	1,320	420	800	77.5	170	540	195	1120	150	1,250

Model No.	型號	Unit	PBI-705	PBI-905	PBI-1005
Max. product capacity	最大產品容量	Liter	10~25	15~40	100
Screw diameter	螺桿直徑	mm	75	90	100
Screw L / D ratio	螺桿比例	L/D	24/1	24/1	26/1
Inverter motor	普通馬達	HP	40	60	75
Screw rotating speed	螺桿轉速	r.p.m.	15-65	15-65	15-65
Extruding capacity	押出量	kg/hr	90	140	180
Outer diameter of die mouth	模嘴外徑	mm	200	300	350
Accumulator	儲料量	kg	2.5	5	8
Clamping force	鎖模壓力	ton	28	44	56
Oil hydraulic drive motor	泵浦驅動馬達	HP	40	50	50
Air pressure	空氣壓力	kg/cm ²	8~10	8~10	8~10
Air consumption	空氣消耗量	L/min	1500	1800	2000
Total power consumption	總電力	kw/h	85	102	142
Machine net weight	機械淨重	kg	10,000	13,000	22,000
Gross weight	裝箱毛重	kg	12,000	14,500	24,000
Machine dimensions	機械尺寸	m	3.5x1.8x4.5	3.7x1.9x5.5	4.2x2.1x6.4

以上規格如因設計變更恕不另行通知
All specifications and designs are subject to change without notice.

PBI-X Sieries

805X / 905X / 1005X / 1105X



Model No.	型 號	Unit	PBI-805X	PBI-905X		PBI-1005X		PBI-1105X	
product max.capacity	最大產品容量	Liter	25	40		100		200	
Screw diameter	螺桿直徑	mm	75	75	90	90	100	100	115
Screw L / D ratio	螺桿比例	L/D	28/1	28/1		28/1		28/1	
Inverter motor	變頻馬達	HP	50	50	75	75	100	100	125
Screw speed	螺桿轉速	r.p.m.	15-65	15-65		15-60		15-60	
Extruding capacity	押出量	kg/hr	165	165	230	230	280	280	350
Die head capacity	儲料量	kg	3	5	8	8	12	12	16
Clamping Force	鎖模力	ton	40	46		100		125	
Hydraulic drive Motor	驅動馬達	Hp	40	40		50		60	
Air Pressure	空氣壓力	kg/cm ²	6~8	6~8		6~8		6~8	
Air consumption	空氣消耗量	L/min	1,800	2,000		2,600		2,800	
Total power consumption	總電力	kw	100	105	135	142	172	180	210
Machine net weight	淨重	kg	12,500	16,000		22,000		27,000	

特色 FEATURES

此系列機型以儲料試模頭為標準配備，適合生產工具箱、玩具、汽車導管、可堆疊化學桶 IBC桶等。

This series of machines are equipped with a standard accumulator die head. Especially ideal for producing tool boxes, toys, automotive ducts, stacking chemical barrels, and IBC tank and so on.

- ❖ 模頭設計為先進先出儲料式模頭，方便清料，縮短換色時間。
- ❖ 模頭為單油壓缸射料，並設計以多段式射料速度設定。
- ❖ 模頭可升降及前後移動方便更換模具，並可以左右微調，方便校正模頭和模具的位置。
- ❖ 模架形式為對角型導桿設計，開閉模方向與螺桿平行。
- ❖ 模架以子母缸為作動方式，子剛作為快速開關模之用途，母缸作為主要鎖模之用途。
- ❖ 油壓系統採比壓比流邏輯式迴路。
- ❖ 電氣控制為觸控式人機介面系統，搭配比壓油路系統可在操作站上監控及設定全機的功能及狀態。如溫度設定、油壓設定、塑料厚薄控制、資料儲存等。
- ❖ First-in and First-out accumulation die head provides convenient material cleaning and shortens color change time.
- ❖ Die head features single hydraulic cylinder injection, combined with multi-step and injection speed settings.
- ❖ Die head can be elevated for convenient mold change. It also can be micro-metrically adjusted in the right/left direction in order to provide convenient distance calibration between die head and mold.
- ❖ Maddock-type screw combined with gearbox assures an extremely uniform mixing effect.
- ❖ Mold carriage is a diagonal Tie Rod structure. Mold open/close direction is parallel with screw.
- ❖ Mold carriage is activated by an advanced cluster hydraulic cylinder. 2 sub-cylinders for mold closing and opening with high-speed, 1 main cylinder for mold clamping with high pressure.
- ❖ Hydraulic system employs proportional pressure and a flow logic circuit.
- ❖ Equipped with a human machine interface (HMI) touch screen control system, combined with a proportional pressure hydraulic circuit. All the machine functions and conditions can be monitored and set on the control cabinet such as temperature setting, hydraulic setting, parison control and data saving etc.

選用配備 OPTIONAL EQUIPMENT

- ❖ 機械手
- ❖ 雙油壓缸成品頂出設備，適用於生產野餐桌板、工具箱
- ❖ MOOG 100及400 點厚薄控制器
- ❖ Take out robot.
- ❖ Double hydraulic cylinder product ejecting device: suitable for producing picnic tables and tool boxes.
- ❖ Moog 100 and 400 points parison control.



PBI-XL Series

1205XL / 1305XL



PBI-XL
Series
1205XL / 1305XL

Model No.	型 號	Unit	PBI-1205XL		PBI-1305XL	
product max.capacity	最大產品容量	Liter	350		1,500	
Screw diameter	螺桿直徑	mm	115	125	135	
Screw L / D ratio	螺桿比例	L/D	28/1		28/1	
Inverter motor	變頻馬達	HP	125	150	250	
Screw speed	螺桿轉速	r.p.m.	15-60		15-55	
Extruding capacity	押出量	kg/hr	350	450	630	
Die head capacity	儲料量	kg	16	20	35	50
Clamping Force	鎖模力	ton	160		230	
Hydraulic drive Motor	驅動馬達	Hp	75		100+7.5	
Air Pressure	空氣壓力	kg/cm ²	6~8		8-12	
Air consumption	空氣消耗量	L/min	3,200		4,600	
Total power consumption	總電力	kw	221	250	485	
Machine net weight	淨重	kg	32,000		100,000	

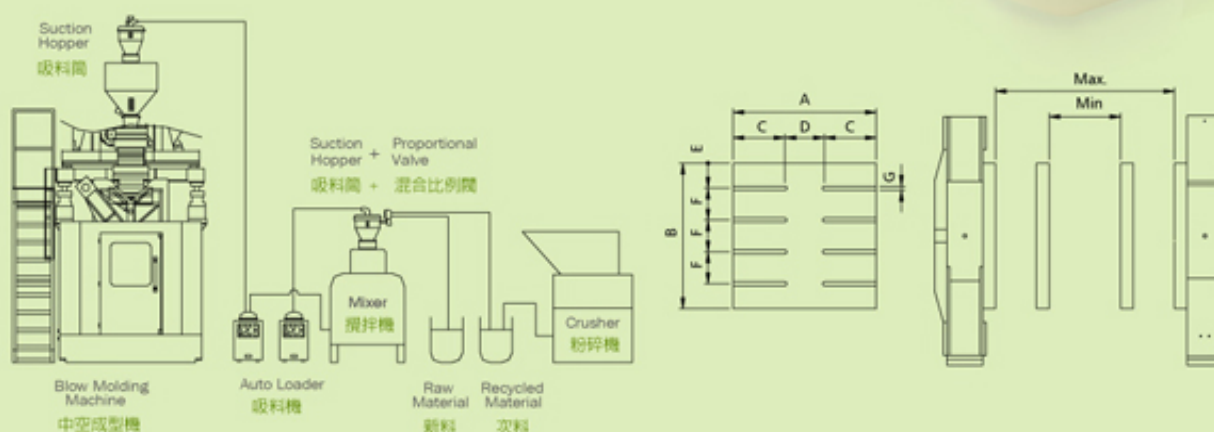
以上規格如因設計變更恕不另行通知
All specifications and designs are subject to change without notice.

特色 FEATURES

此系列機型以儲料式模頭為標準配備，適合生產野餐桌板、L-RING桶、水塔等最大容量至1500公升之產品。
This series of machines are equipped with a standard accumulator die head. Especially ideal for producing picnic tables, L-ring barrels, and water tank etc...up to 1,500 liters products.

- ❖ 模頭設計為先進先出儲料式模頭，方便清料，縮短換色時間，並設計以單油壓缸射料，多段式射料速度設定。
- ❖ 模頭可升降及前後移動方便更換模具，並可以左右微調，方便校正模頭和模具的位置。
- ❖ 模架型式為對角型導桿設計，開關模方向與螺桿平行，可前後移動方便換模。
- ❖ 模頭升降行程可加長至1米，適用於生產8呎以下之野餐桌板或水塔等大容量產品。
- ❖ First-in and First-out accumulation die head provides convenient material cleaning and shortens color change time, and features single hydraulic cylinder injection, combined with multi-step and injection speed settings.
- ❖ Die head can be elevated for convenient mold change. It also can be micro-metrically adjusted in the right/left direction in order to provide convenient distance calibration between die head and mold.
- ❖ Mold carriage is a diagonal Tie Rod structure. Mold open/close direction is parallel with screw, and can be moved forward/backward for convenient mold change.
- ❖ Die head elevation stroke is available to extend to one meter, and it is suitable for picnic tables under 8 feet and water tank high capacity product.

系列 配置圖 PBI-X SERIES LAYOUT



模板尺寸圖

MOLD PLATEN DIMENSIONS

UNIT:mm

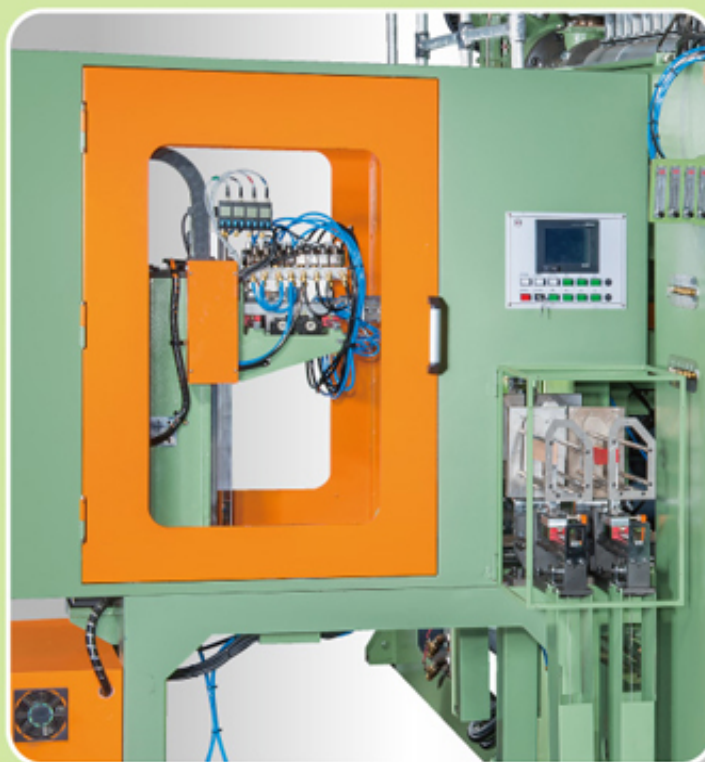
NO.	Max.	Min.	A	B	C	D	E	F	G
PBI-805X	1,000	400	750	800	-	-	-	-	-
PBI-905X	1,200	400	950	950	-	-	-	-	-
PBI-1005X	1,450	450	1,100	1,200	400	300	165	290	22
PBI-1105X	1,600	500	1,200	1,600	400	400	275	350	22
PBI-1205XL	2,000	550	1,400	1,800	400	600	300	400	22
PBI-1305XL	2,650	1,250	1,900	1,800	650	600	300	400	-



In-mold Labeling

模內貼標機

- ❖ 適用於PP, PE等塑膠類材質，貼標後與容器融為一體，外型上較為美觀、細緻。
- ❖ 三軸使用滾珠螺桿配合傳動，成品植入位置相當準確。
- ❖ 模內與模外成品植入調整採用數值控制。其速度行程最快約3秒。
- ❖ 機台成品植入的選擇依機台形式而定。
- ❖ 當瓶子模具設計為不規則形狀，可由吸盤上之彈簧作調整，直到完全貼平模具平面。
- ❖ Suitable for PP, PE... plastic material, label will combine with bottle, the bottle appearance will be more perfect and beautiful.
- ❖ X,Y,Z axis position with ball screw to control high precision of label position.
- ❖ In mould and out mould labeling machine is adjust by numeral control.
- ❖ Label machine is chosen by machine type.
- ❖ If the mould is designed with irregular shape, sucking disk will be adjusted by spring, until it can be full contact with surface of the mould.



Power Saving System

省電伺服系統

- ❖ 省電伺服系統透過變頻驅動器及伺服馬達控制轉速從零到最大值。
- ❖ 省電伺服系統適用於各等級之中空成型機，可節省不必要的功率耗損。
- ❖ 馬達在無負載操作或壓力控制過程中以趨近於零的速度運轉。
- ❖ PBI系列使用省電變頻，可緩衝機器瞬間電流量，降低傷害及用電量。
- ❖ The power saving system provide variable flow by driving a piston pump directly with an servo motor and controlling the rotational speed in a range from zero to the maximum level.
- ❖ Energy saving with low heat generation, the pump run at a rotational speed suitable for mechanical requirement, eliminating unnecessary power loss.
- ❖ The motor operates at a near-zero speed during unloaded operation or pressure control.
- ❖ PBI series use inverter, could lower machine electric current and reduce injuries.



Leak Detector

測漏機

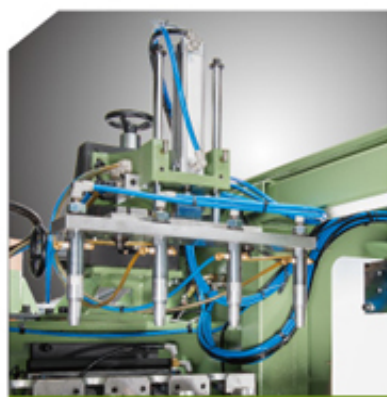
- ❖ 測漏機的速率與準確性可加強機器規劃，將大幅提升產品的品質水準與效率，更能符合客戶對不同規格的需求。
- ❖ 使用易於操作的LCD觸控螢幕，可減少設定程序與操作時間。
- ❖ 測試容量可從100ml 到 20公升，並可自動剔除不良之產品。
- ❖ 配備R型或平直型輸送帶，可依機台調整高度。
- ❖ Leak detector can increase qualities and efficiency improve machine planning, to meet the customer's requirement for different specification.
- ❖ LCD touch screen with easy operate control system, can reduce the setup and operation time.
- ❖ Testing capacity from min 100ml up to 20 liters, can auto remove bad product.
- ❖ Equipped with R type or horizontal conveyor, can base on machine high to adjust conveyor level.

Optional Equipment

選購配備



打溢料設備
Auto Deflashing Device



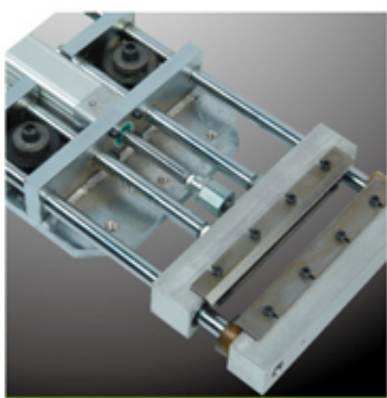
後冷卻設備
Post Cooling Device



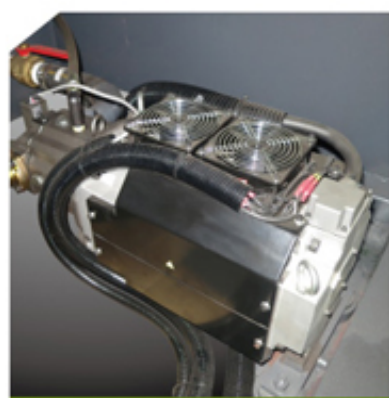
廣口切割設備
Auto Cutting Device



MOOG 100/400 點厚薄控制器
MOOG 100/400 POINTS
PARISON CONTROL



冷切刀出料封口設備
Auto Sealing And Cutting Device



省電伺服馬達
Power Saving Pump



機械手
Take-out Robot



輸送帶型大瓶口溢料去除設備
Conveyor Type Auto Cutting Device



測漏機
Leak Detector

週邊設備

- 空壓機 / Air compressor
- 攪拌機 / Mixer
- 水冷式冷凍機 / Water chiller
- 冷卻水塔 / Cooling tower
- 吸料機 / Auto. loader
- 料斗乾燥機 / Hopper dryer
- 比例閥 / Proportional valve
- 除濕乾燥機 / Dehumidifier
- 粉碎機 / Power crusher
- 輸送帶 / Conveyor
- 模具 / Mold





Since 1977

凱美塑膠機械股份有限公司 KAI MEI PLASTIC MACHINERY CO., LTD.

台灣 台中市太平區永義五街 15 號

NO. 15, YEONG YI 5th ST., TAIPING DISTRICT, TAICHUNG CITY, TAIWAN.

TEL : +886-4-2277-7457 FAX : +886-4-2277-7455, 2275-7972

[http : //www.kai-mei.com.tw](http://www.kai-mei.com.tw)

E-mail : kaimai@kai-mei.com.tw



盛美塑膠機械有限公司 SHENG MEI PLASTIC MACHINERY LTD

廣東省東莞市常平鎮漱新管理區東大坑工業區

DONGDAKENG, SUXIN, CHANGPING DONGGUAN, GUANGDONG, P.R.C.

TEL : +86-769-8339-7518, 8339-7528, 8339-7538

FAX : +86-769-8339-7568 郵政編號 : 523569

[http : //www.sheng-mei.com](http://www.sheng-mei.com)

E-amil : dgsm@vip.163.com