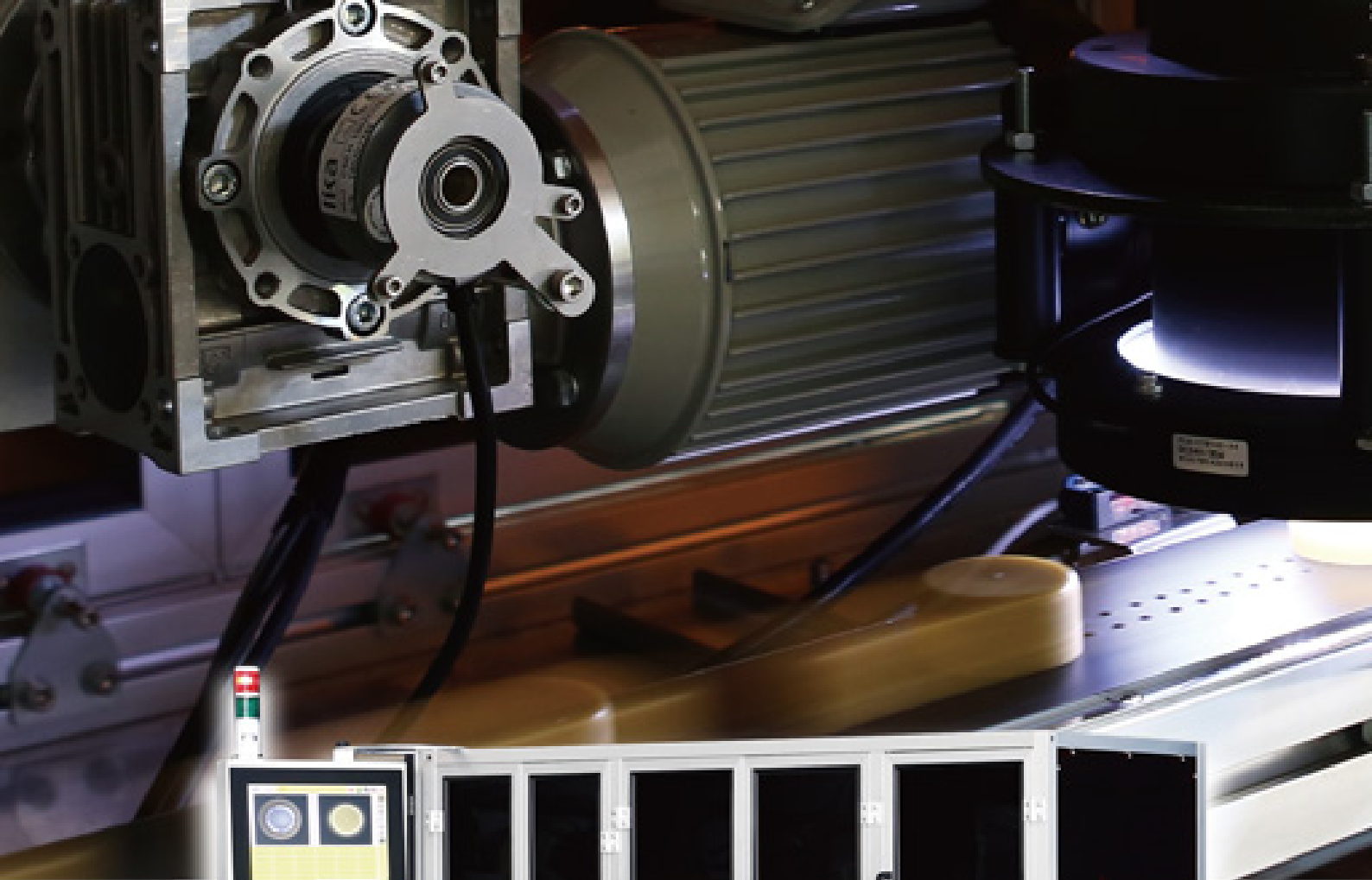




# VNS

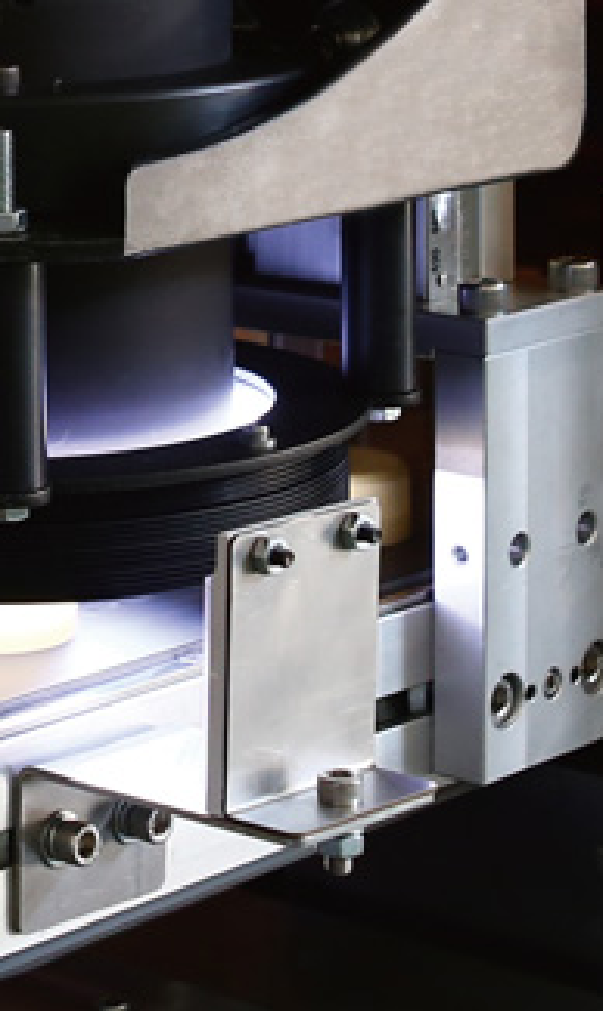
## CLOSURE VISION SYSTEM

High Speed Closure Inspection System



# CLOSURE VISION SYSTEM

High Speed  
Closure Inspection System



## FEATURES

- The computer control system with touchable human machine interface.
- Simple and quick adjusting the required closure size.
- High efficiency capacity, fastest up to 2000pcs / min.
- The main body is made up of stainless steel to ensure production quality from pollution.
- Self-learning image processing technology, easily to adjust.
- 100% shaving defective products.
- Customization of integrating the closure line-cutting machine and the folding machine as well as the backside process quality monitoring.

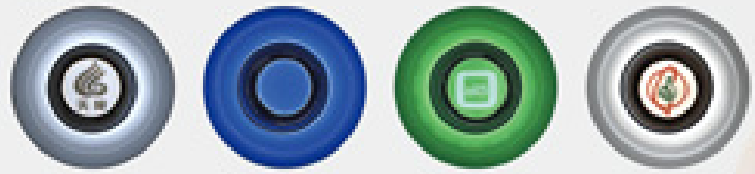


## FUNCTIONS

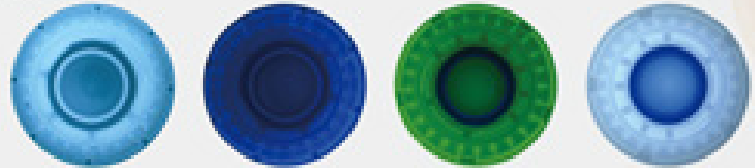
- High speed closure inspection system is suitable for detecting internal quality of plastic closures after cutting ring and folding its edge, with the speed up to 2000pcs / mm.
- This system can inspect defective closures, such as: closures with visible burr, stains, and shapeless, distorted and deformed parts, parts which cannot meet the standard size, and oval closures.
- This system provides statistical information, such as the number of the lid, the average value and the maximum value of the production, high-quality closure information, the total data of the defective lid, the lid with different defecting items, and the maximum number of consecutive defective closures.



Outside



Inside



## SPECIFICATIONS

Type No.	Productivity (pcs / min)
CVS-1000	2000

Closure Application	Dimension	Units
Closure Diameter	25 ~ 50	mm
Closure Height	12 ~ 60	mm

## Vision & Service



VNS-VISION CO., LTD

Add : 10F-2, No.168, Anhe Rd., Taichung City 40765, Taiwan (R.O.C.)

Tel : +886-4-24627319 Fax : +886-4-24627329

E-mail : service@vns-vision.com

www.vns-vision.com

