

BSTG SINCE 1987

*Your Competent Partner
for Gearbox.*



CRAFTSMANSHIP

Advanced Craft | Exceptional Performance

BSG founded in 1987 in pursuit of constant innovation and breakthroughs is committed to gearbox design and fabrication and its application to all sorts of rubber and plastic machines, steel and iron, green field, energy and automatic equipment. Our premium parts, bulk, technology and craft meet the DIN standards. We adopt the advanced processing equipment made in Germany and integrate our production lines into one. Upholding the demand-oriented motto, we make equipment with high performance demanded by our clients.

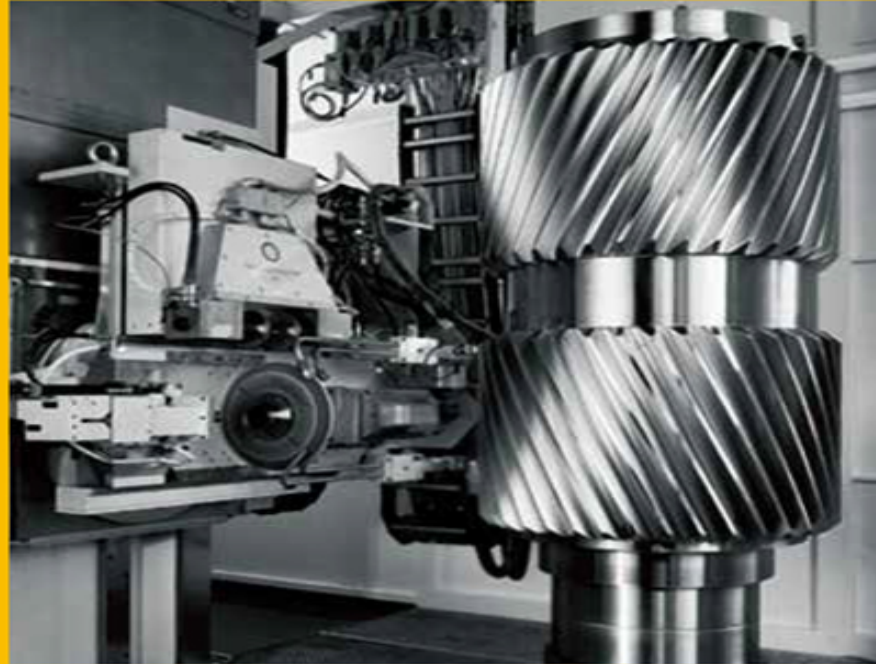
Our products are with the BSG design spirit that blends the look and rigidity for magnificence and taste. The high-quality gearbox is the accomplishment fulfilled by the BSG teamwork committed to details. Each component is secured to meet the standards via the precision gauge instruments to maximize the potency of the product.

BSG upholds the 4 values of Advanced craft, Innovative design, Quality and services, Exceptional performance. Our team is full of passion and committed constant advancement via learning for ongoing perfection and enrichment of the gearbox. We are dedicated to craft and aesthetics of our gearbox, optimize the performance and experience, and fulfill the demand of our clients for high performance.









ADVANCED CRAFT

Exceptional craft | Details refined | Advancement over time | Top brand trusted

The motto in pursuit of Exceptional craft as the value of BSG

BSG is committed to the high dense gear by using the prime German billet processed by the 3,500-ton forging pressing.

The high density is attained by trivial complex forging procedures and heat treatment under a strict control.

The German gear processing equipment Gleason-PFAUTER applies to grinding the micrometer-class gear driving precision.

The technicians with the skills and experience of 30 years are dedicated to strict quality control over details.

In pursuit of quality | Listening to the demands
Never-ending improvement | Customers first

SERVICES QUALITY

Quality is a service promised by BSG for each client

We value each making procedure, apply a strict quality control over details and make sure quality consistency to all parts in the process of design innovation and technical development. Our priority is to tackle the issues arising from our products by listening to the demands of each client. We redefine the services quality since the fine quality is where the service begins.





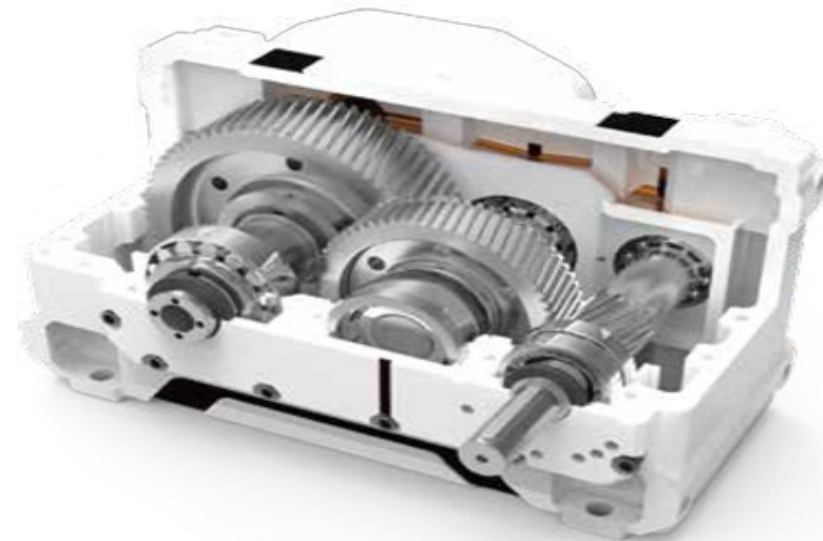


DESIGN INNOVATION

Design via listening | Value added | Innovation plus breakthroughs | Mechanical aesthetics

Listening to the demands for design is the driving force for innovation plus breakthroughs

Design begins with listening to the demands of clients. BSG designs for each client by blending theory and practice for innovation plus breakthroughs as confronted with challenges. The mission of our innovation is to advance the competitiveness of each client by tackling issues and meeting demands. Design begins with the fundamental structure - reaching the high rigidity of our products with the mechanical aesthetics. Innovation is a breakthrough - the innovative integrated herringbone gear that proves the bold and brave spirit of BSG.





EXCEPTIONAL PERFORMANCE

Smart design Top performance | Scientific figures Outstanding actualization

Exceptional performance actualized by the factual data of hyper high revolutions

High revolutions: 1,800rpm

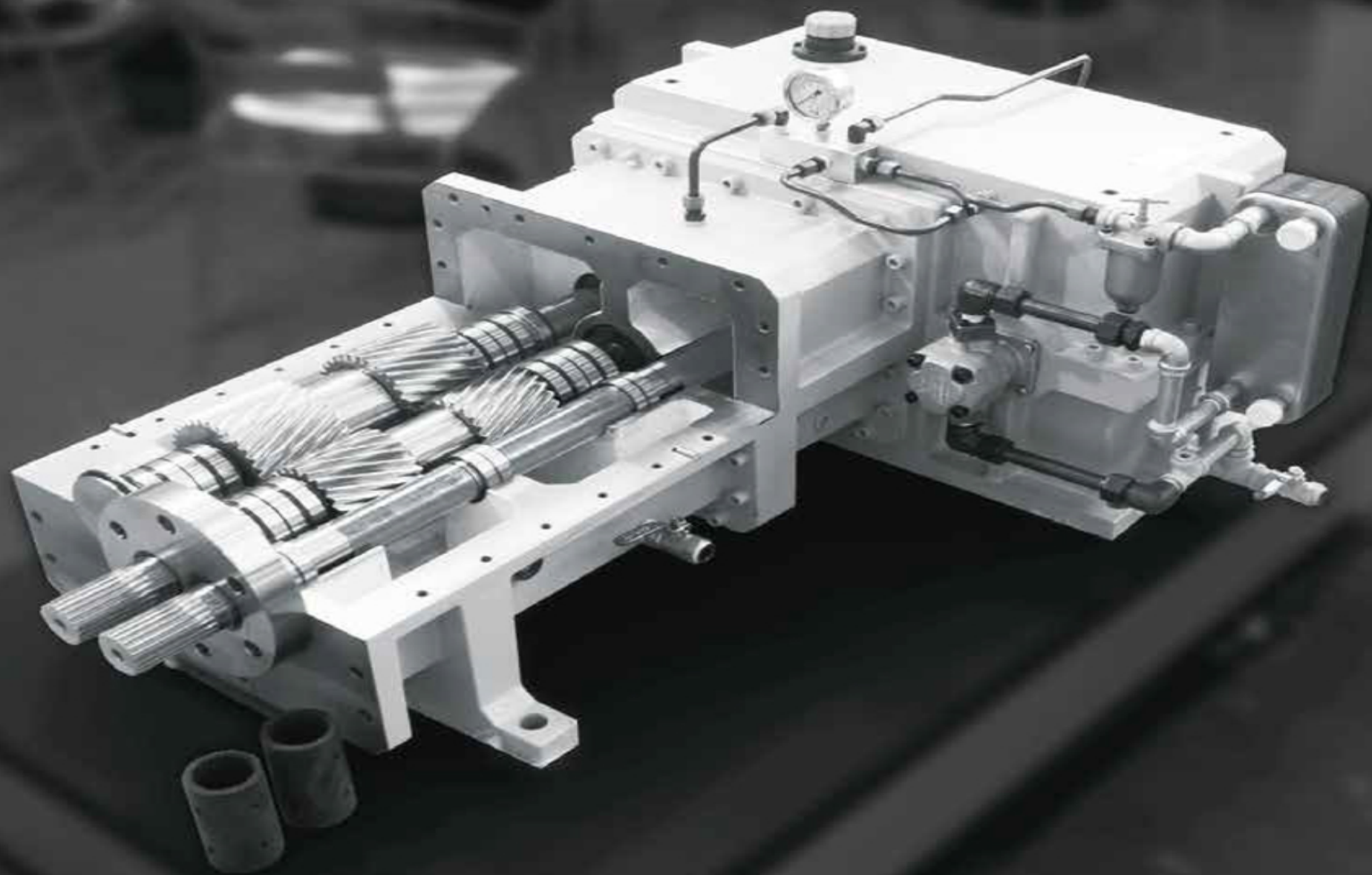
Torque: 18 N.M/cm³

Multilayer structure: An increase of 50% case rigidity with handy maintenance

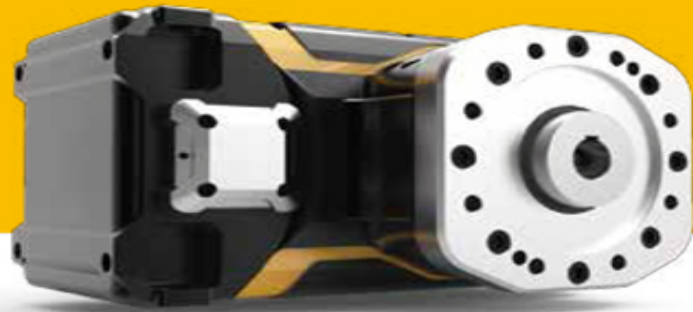
Self lubrication: A drop of 20% temperature

Safety device: A precise trip set by the torque Safety for your equipment





ADVANTAGE



RAW MATERIALS OF PARTS

Pure and refined

We value not only the basic ingredients but also the purity of raw materials. The procedures of the subsequent heat treatment applying to the pure raw materials free of impurities can be precisely controlled. The gear requires the density over 45 for the robust driving force, so we only use the raw material processed by the 3,500-ton forging pressing machine.



PROCESSING EQUIPMENT

Precision craft

The precision is the sole consideration of BSG procurement of processing equipment. The trivial details of gear processing are often neglected, but we embody our pursuit of Fine Quality via exceptional craft by performing the detailed production plan by all means with all efforts.



HEAT TREATMENT

Perfection from strict heat control

It is necessary to control the heat and duration precisely in terms of the size of each part to make the depths of tenacity and solidity meet the expectation. Heat control is the key of heat treatment technique and fine skills take time. To attain the fine quality and quantity of products, the complex detailed procedures of heat treatment are irreplaceable. Later, we satisfy the strength design of the raw material via the figures of the physical functions tests.

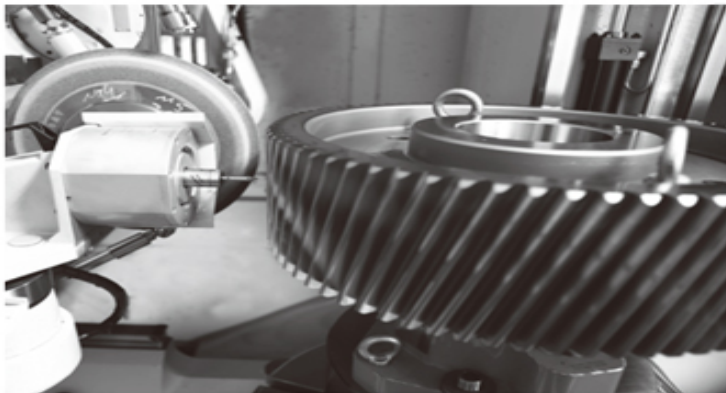


DESIGN AND FABRICATION

Processed by the complicated herringbone gear

The gearbox design begins with the structural rigidity. The rigidity covers some levels, including casing structure, gear structure and bearing structure. Various simulations of stress analyses apply to the casing structure to prevent the case from deformation. The lifetime calculation must apply to gear and bearing structures to secure normal operation of the gearbox within the lifetime estimated





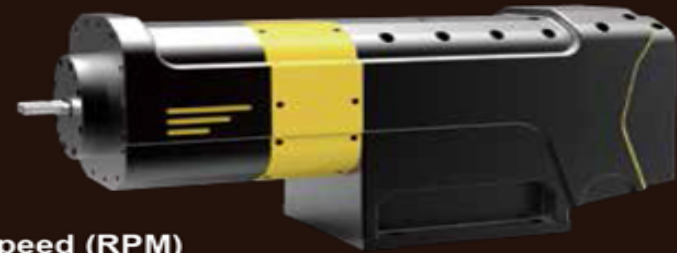
QUALITY MANAGEMENT

Expertise and precision

The standard sizes apply to all parts and components. BSG requests all parts and components pass the tests of gauging instruments and the staff make sure quality consistency via a strict control over all details. Thus, BSG redefines the spirit of the brand with The staff as the best instrument.

PRODUCTS

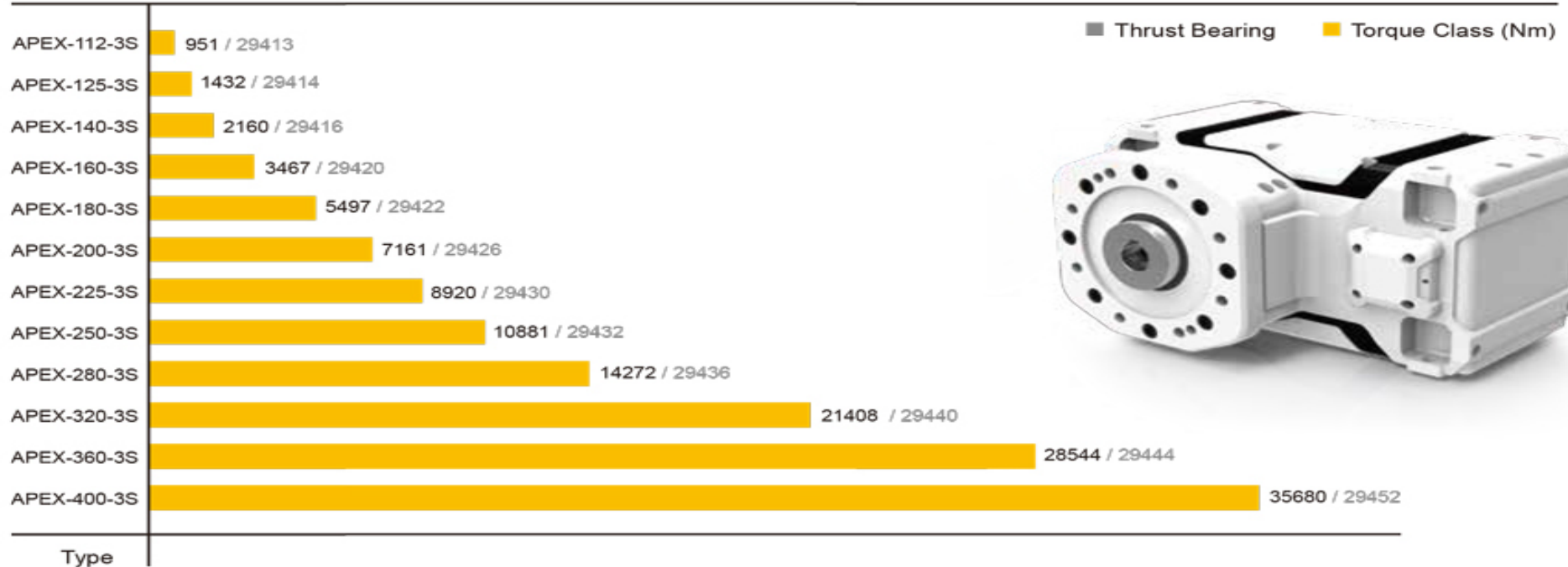
How to Choose Right Gear box ?



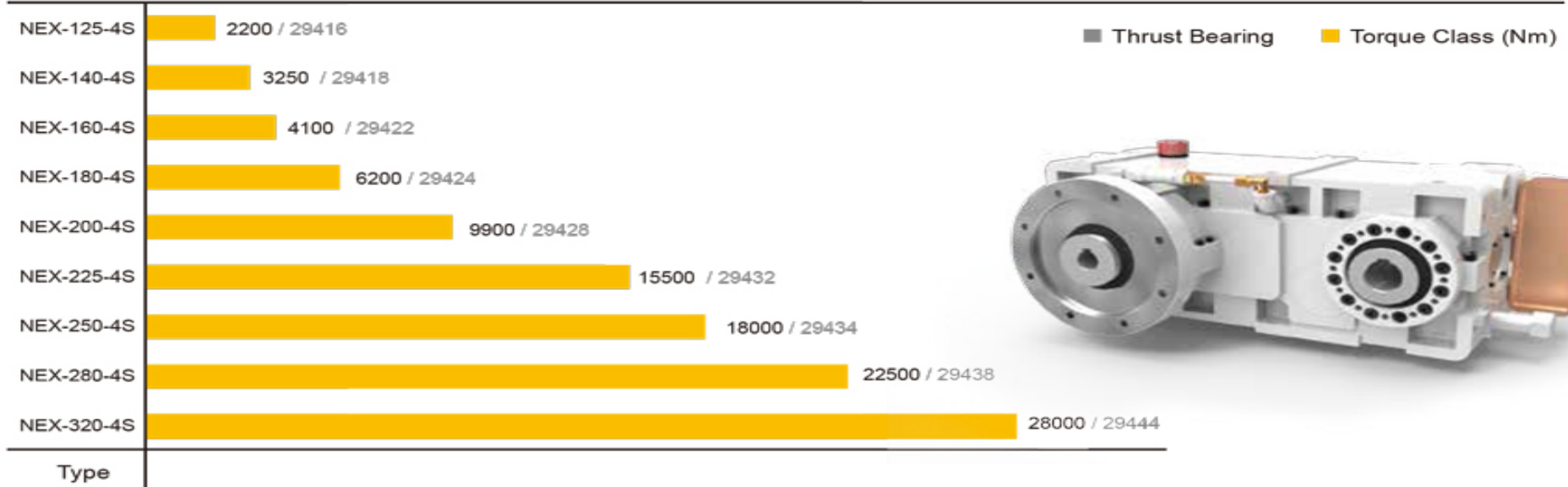
Torque formula (N.M) = 9549 * power of motors (KW) / output speed (RPM)

* The above safety factor is 1.5, Calculation method is calculated according to AGMA2001-C95

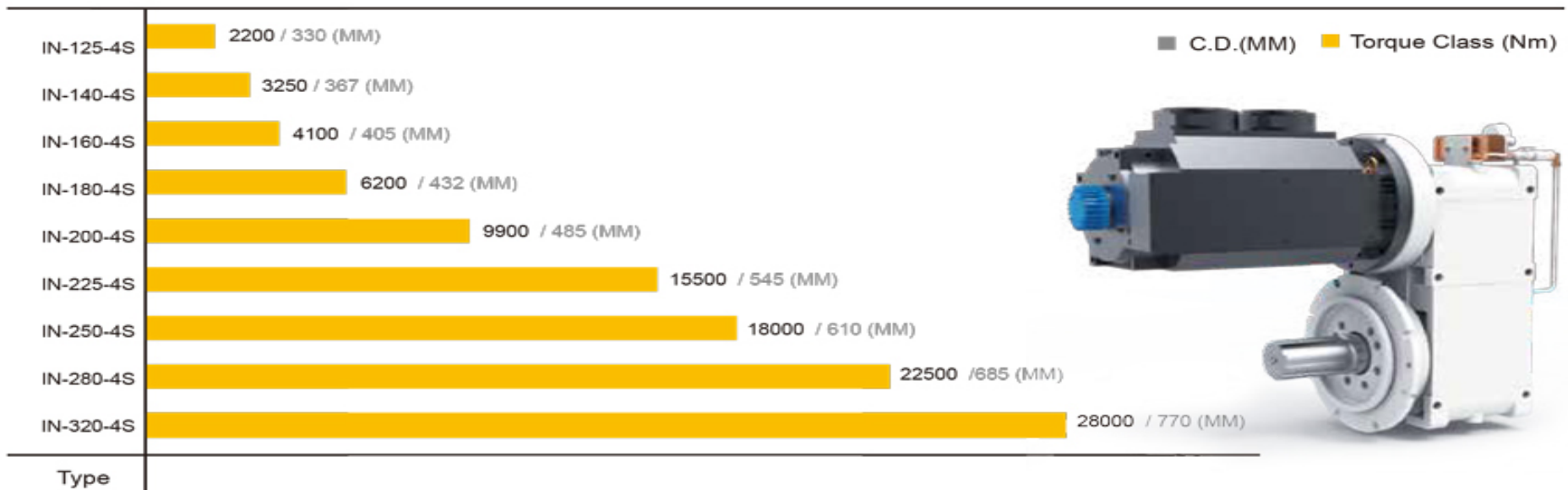
APEX Gearbox for Single-Screw Extruder



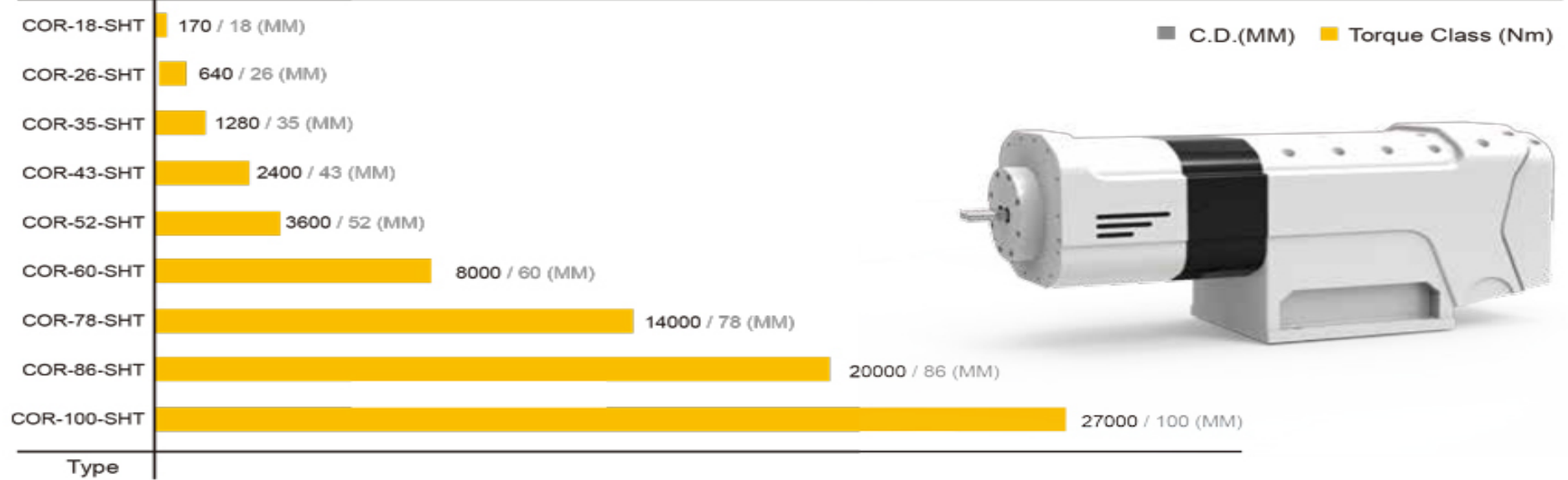
NEX Gearbox for Single-Screw Extruder



IN Electric Injection Molding Machine



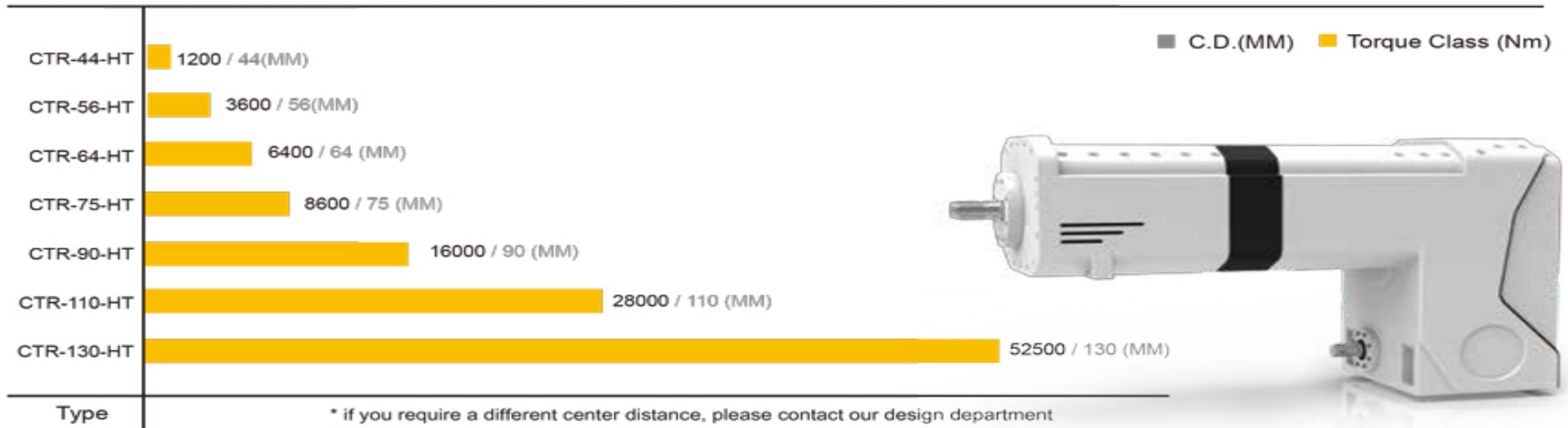
COR-SHT Gearbox for Co-rotating Gearbox



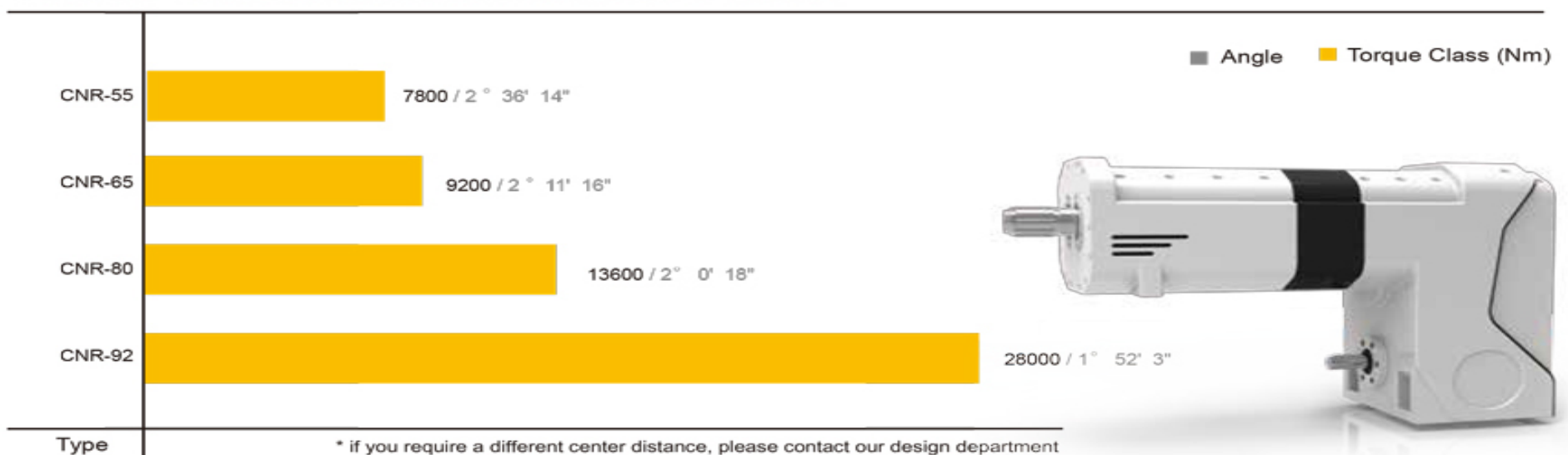
COR-HT Gearbox for Co-rotating Gearbox



CTR-HT Gearbox for Counter-rotating Twin-screw Extruder



CNR-HT Gearbox for Conical Twin-screw Extruder





BSG GEAR LTD.

No.11, Aly. 31, Ln. 69, Xingnong Rd.,
Shanhua Dist., Tainan City 741, Taiwan

Tel +886-6-5811-101

Fax +886-6-5811-103

E-mail sale@bsg.com.tw

www.bsg.com.tw