



FlowSave

Continuous Loss-In-Weight Gravimetric Blender

連續失重式秤重計量機

FlowSave fulfills the extrusion sector's demands for accurate and homogenous dosing and constant blending. It provides extremely precise loss-in-weight blending and feeding of various size and bulk density materials such as pellets, regrind and powder.

FlowSave covers a wide production range of up to 1500 kg/h, and can feed up to 5 materials. Separate load cells for each component allow constant monitoring for each component flow. If there are any changes in properties, e.g. bulk density, pellet size, etc., the FlowSave automatically adjusts individual feeders to match the extruder rate at the exact required ratio, without affecting the accuracy of the blended material. This ensures a constant blending ratio according to the recipe at all times.

FlowSave 能提供擠出機所需要的穩定、均勻且精確的計量原料混合比例。能處理各種形狀大小及不同假密度的原料，如顆粒料、粉碎料、和粉狀原料。

FlowSave 能計量五種不同原料，其輸出量能高達 1,500 kg/h。FlowSave 每一計量站能單獨秤重計量原料，並針對每一站的原料輸出不斷做監控。如果原料性質改變時，例如假密度，顆粒形狀大小等等，FlowSave 能自動調整個別的計量站來搭配擠出機的速度，正確的達成原料的混合比例，並確保生產所需的正確的原料混合比例。

FlowSave advantages and features:

優點及特性

- Compact design and low space requirement.
機構設計精緻美觀，節省安裝空間。
- Optimal homogeneous mixing of the dosed materials.
能精確的計量所需的原料混合比例。
- Easy and quick cleaning when changing recipe.
原料配方比例改變時，能容易及快速清理。
- Gram/meter monitoring or Extruder control Kg/hr control Kg/hr for options.
可選購能控制擠出產品米重(gram/meter)或擠出機輸出量 kg/hr 的裝置。
- Changeable dosing screws for different throughput ranges (from 0.02 up to 250 kg/h) for each material.
依照不同的原料及輸出量(0.02~250 kg/h)可搭配更換不同的計量螺桿。
- Multiple recipes.
可計量多種原料配方比例。
- Designed for extrusion rates up to 1,500 kg/hr.
可滿足擠出機輸出量高達 1,500 kg/h 的需求。
- Flexible configuration permits the installation of up to 5 dosing stations.
可依生產需求計量高達五種不同原料。

FlowSave

FASI-View

FASI 的監測功能

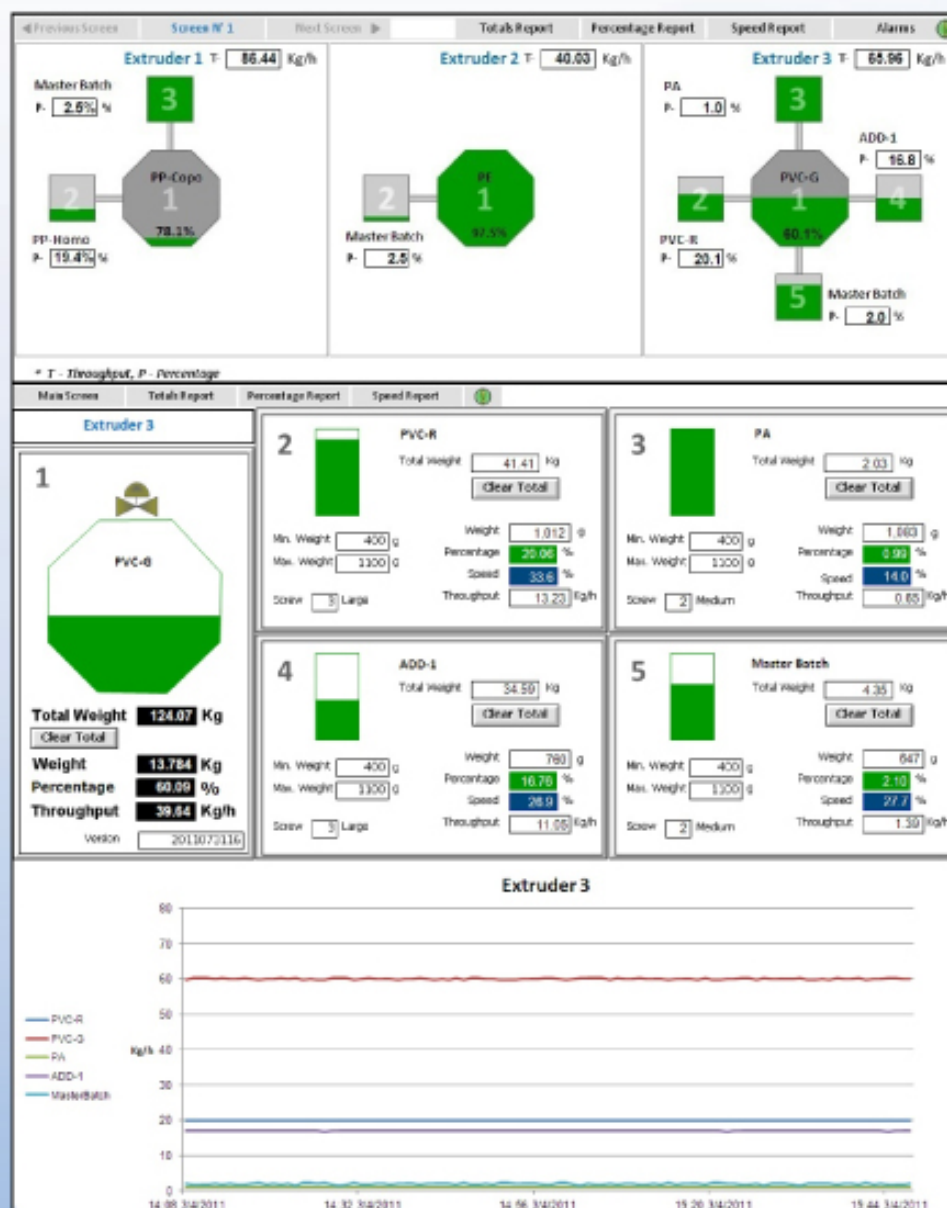
A monitoring program for the FlowSave range of feeders

You can utilize FASI-View to:

- See in one single screen the working statuses of all the FlowSave feeders
- View historic graphs of each feeder
- See all the parameters of each feeder, such as percentage of each material, etc.
- Update the working parameters directly to the feeders
- Generate historic reports, such as total weight, actual percentage, etc.

利用控制器的監控軟體及畫面去檢視 FlowSave 的運作狀況，並可操作如下功能：

- 每個原料計量站的運作狀況。
- 藉由圖表檢視每個原料計量站的歷史資訊。
- 檢視每個原料計量站的設定參數，如每個原料的計量比例。
- 可直接更新原料計量站的計量比例。
- 可以產生工作報表，如原料總重量、各原料計量站的計量比例等。



本公司保留產品設計變更之權力，產品規格如有變更，恕不另行通知。

Specifications, appearances and dimensions are subject to change without prior notice.



台美德科技股份有限公司

Formosa Automation Systems, Inc

Tel: +886-2-2641-5338 Fax: +886-2641- 5360

[Http://www.fasi.com.tw](http://www.fasi.com.tw)

E-mail: formosa@fasi.com.tw

Gram/meter Monitoring

產品的米重(gram/meter)監測控制：

Using a shaft encoder, the FlowSave can monitor the throughput in terms of gram/meter. By continuously measuring the material flow (kg/h) by means of a loss-in-weight method, and by monitoring the product speed (m/sec), the FlowSave translates the throughput to terms of gram/meter. Gram/meter monitoring allows easy monitoring for the operator.

FlowSave利用軸端編碼器，藉由失重式的秤重原理，持續地監控原料輸出量(kg/h)，及監控產品生產速度(m/sec)，控制器將自動演算轉換為產品的米重 (gram/meter)控制並顯示數據於操作畫面，便於操作者的監控。

Extruder Control (kg/hr)

擠出機輸出量 kg/hr 的控制：

The FlowSave's controller can supply a continuous control signal to the extruder's controller, which controls the extruder rpm to ensure the required pre-set throughput. The FlowSave changes the extruder's speed to meet the desired throughput, and simultaneously adjusts the screw speed of each component to ensure constant ratio of the material at all times.

FlowSave 控制器提供連續的控制訊號與擠出機的控制器連線，並控制擠出機的螺桿轉數，以確保達到預設的原料輸出量 kg/hr。

FlowSave 可以改變擠出機的螺桿轉數以達到所需要的原料輸出量 kg/hr，並同時調整每一個原料計量站的螺桿轉速，以確保生產過程維持在正確的原料混合比例。

Precision

精確的計量：

The material flow is monitored continuously, and the controller automatically regulates the rotation speed of the dosing screws. This ensures a precise homogenous blend of materials.

Its high resolution weighing system allows precise low-rate additive feeding.

FlowSave 控制器能持續性的監控原料的輸出，並自動調整計量螺桿的轉速，以確保原料精準的計量以達到正確的原料混合比例。

高靈敏的秤重控制系統，可以精確的計量微量比例的添加劑。

Savings

降低生產成本：

You can achieve maximum savings with the FlowSave. The final product shows a considerably lower fluctuation range, minimizing the usage of costly materials and reducing waste and start-up scrap. You can lower the additive percentage during operation, which also represents a significant saving.

FlowSave 可以將產品品質的瑕疵降至最低並且減少原料的使用及浪費，也可以降低添加劑的添加比例，進而降低生產成本。